

요구사항
 1. 쓰레기분리수거장(음식물포함)
 2. 인도설치
 3. 동간 10m이상
 4. 세입자들이 새로운 "리" 지정 요구
 이므로 대지면적의 25%를 마을회관 건립필지 마련

PROJECT TITLE

부활촌 무늬미 465-6
 공동주택 계획안

NOY

103-24-20

103-25-20

103-26-20

103-27-20

103-28-20

103-29-20

103-30-20

103-31-20

103-32-20

103-33-20

103-34-20

103-35-20

103-36-20

103-37-20

103-38-20

103-39-20

103-40-20

103-41-20

103-42-20

103-43-20

103-44-20

103-45-20

103-46-20

103-47-20

103-48-20

103-49-20

103-50-20

103-51-20

103-52-20

103-53-20

103-54-20

103-55-20

103-56-20

103-57-20

103-58-20

103-59-20

103-60-20

REVISION

DRAWING BY

SENIOR ENGINEER

PROJECT MANAGER

ARCHITECT APPROVAL

ASSOCIATE ENGINEERS

DATE

2017. 04

SCALE

1/500

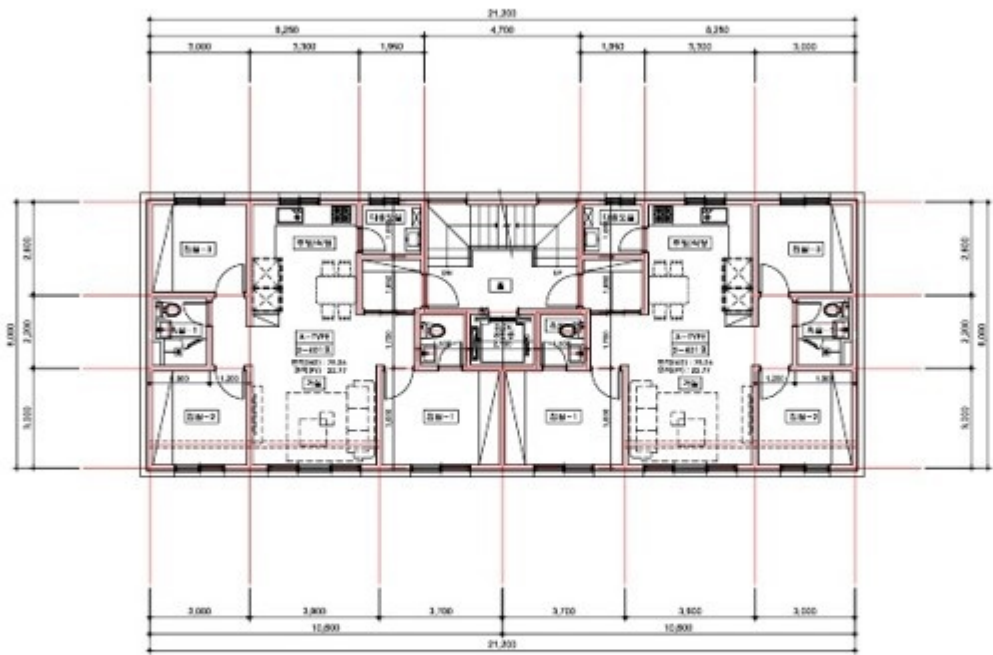
DRAWING TITLE


단지 계획도

DRAWING NO.

00

SHEET NO.




 2152-49 평면도
 SCALE 1/500

Project No.

00

Site

Name

Design No.

Scale

Project Name

Project Address

Project Manager

Date

2014.03

Scale

1:500

Project No.

2152-49 평면도

Project

00

Site