



**YOUR
AMBITION**

X

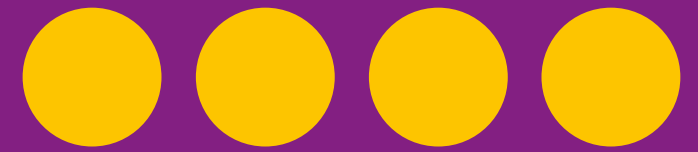
Coventry
University 

The ultimate collab

**YOUR
AMBITION**

X

**OUR
INSPIRATION**



[SEE](#)

[MORE](#)

**Visit an
Open Day**

**BOOK
NOW**

**No.1 in Midlands
for student satisfaction**
with teaching and learning opportunities

National Student Survey (NSS) 2022

Notes to students



Message from the Vice-Chancellor and CEO

Coventry University means a lot to me, not just as Vice-Chancellor, but as a double graduate.

I'm proud of what we offer our students. Whether it's our expert teaching staff, continual investment in facilities or focus on employability, we're passionate about maximising your potential and supporting you every step of the way.

Studying at Coventry University means becoming part of a global university but also a close-knit community, providing a real sense of belonging. In this spirit, it's been great to welcome back our alumnus

Andy Leek and his **Notes to Students** project, with its supportive messages and advice for those starting out on their university journey.

I know that nothing beats experiencing our university first-hand, so my advice would be to:

- come and see us at an Open Day
- talk to our staff and students
- explore the campus and city centre.

Discover for yourself why thousands of students choose our university every year. We'll help you to create a better future.

Professor John Latham CBE
Vice-Chancellor and CEO, Coventry University Group
Extraordinary Professor, Stellenbosch University



Notes to Students is a project from artist Andy Leek, a graphic design graduate of Coventry University. These striking messages have been displayed around campus, aimed especially at those starting their university journey.

Designed to offer supportive advice and guidance, the messages are tailored specifically for Coventry following workshops with students who shared their experiences of university life.

"I wanted to do something for Coventry students because I came to this university and when I look at them, they remind me of myself, just at a different point in their journey. It's all about offering a few words of hope.

ANDY LEEK

LEARN MORE

"I'm thrilled to be coming back to my old university, I made some great friends here who I still see today, this place is full of very happy memories for me. I had a wonderful time here."

Inspired by Andy, here are a few more notes from our students and staff.

ENJOY EVERY MOMENT AND TAKE EVERY OPPORTUNITY YOU GET.

Dan Kiernan
Sport and Exercise Science BSc (Hons)

WHEN ISSUES SEEM BLACK AND WHITE, DIG DEEPER AND FIND THE GREY.

Kam Kaur
Senior Management Support Administrator

DON'T BE AFRAID TO CHALLENGE THE STATUS QUO.

Maksim Ivanov
Food Science BSc (Hons)

SEE

MORE

EDUCATION IS MORE THAN CERTIFICATION.

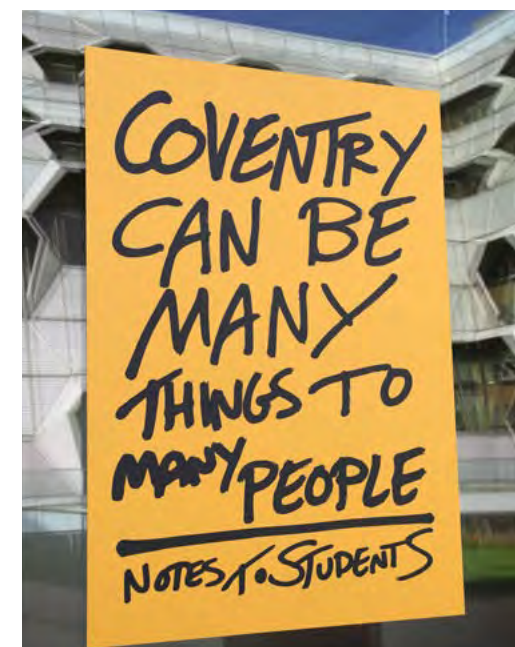
Dr. Alan Richards
Associate Head of School

DON'T THINK TOO MUCH, JUST GO WITH IT AND ENJOY IT.

Luana Alexandre Peres Teixeira Nobrega
Psychology BSc (Hons)

UNI GIVES YOU A LOT MORE THAN EDUCATION, IT GIVES YOU A SENSE OF BELONGING.

Ali Bushnell
Student Liaison and Support Officer



Contents

ABOUT US

- 8 Student experience
- 10 Teaching excellence
- 14 Career prospects
- 18 Global opportunities
- 22 Student support
- 24 Student city
- 30 Accommodation
- 32 Course listings
- 80 Entry and fees for UK students
- 81 Application guide
- 82 International students
- 84 Other study choices
- 86 Course index
- 90 Visit us



SUBJECTS

- 34 Art, Design and Fashion
- 38 Biomedical, Food and Forensic Sciences
- 40 Business, Management and Marketing
- 44 Computer Science and Games
- 46 Economics, Finance and Accounting
- 50 Engineering and Construction
- 54 English
- 56 Geography and Environment
- 58 History, Philosophy, Politics and International Relations
- 62 Law and Criminology
- 64 Mathematics, Physics and Data Science
- 66 Media and Journalism
- 68 Music and Performance
- 72 Nursing, Midwifery and Healthcare
- 74 Psychology and Social Studies
- 76 Sport
- 78 Top-up courses

Imagine the possibilities

At Coventry University, we aim to provide **a great student experience** that covers not only your learning, but also your wellbeing and social life. We do everything we can to help you **feel at home** while you study here and support you to reach your full academic potential and get you ready to start your career.

University can be a **life-changing** experience. To widen your horizons, many of our courses have the option of work placements and overseas trips, as well as the possibility of studying abroad. Find out more on page 20.

Closer to home, university offers a whole new social life and a chance to **meet new friends**, have fun and try new things. You'll find lots of places to hang out on campus and **Your Students' Union** also supports more than 50 societies and 40 sports clubs – a great way to take up a new hobby and make friends.

We recognise that coming to university is a big step and that sometimes you might need a bit of **extra support** and guidance. We are here to help you when you need it. When you arrive, you'll have access to a **success coach** who can help you find what you need to succeed – from accommodation, disability support and finance to academic writing, course resources and more.

Living close to campus in our halls of residence is a great way to settle into student life and make yourself at home in Coventry.

Find out more about our **guaranteed accommodation** on page 30.



YOUR
PASSION
X
OUR
EXPERT
TEACHING



The facilities are **amazing**. We have an entire theatre room to ourselves as well as access to lighting and workshops to get a real **authentic** theatre experience.

Zachary Birch
School of Media and Performing Arts



**5 QS STARS
FOR TEACHING¹**

Whatever your ambition, we're here to support you on your journey.

We provide:

- excellent teaching
- development opportunities
- an innovative learning experience.

¹ QS Stars University Ratings

Inspiring teaching



Our expert staff deliver **innovative teaching** in high-quality facilities. We engage your **passions**, inspiring you to gain a deeper understanding of your chosen subject area.

Delivered **face-to-face** on campus, our teaching and learning experience centres around **in-person** interaction with academics, support services and your peers. This is complemented by our online learning platform

Using our facilities will help you immerse yourself in **'real-world'** situations.¹ Depending on your course, you could experience what it's like to work in an operating theatre, a court room or a television studio. You could work on a live project brief for one of our industry contacts or take part in competitions – adding **valuable experience** to your CV.

An **accredited course** could give you a real head start in your chosen career, often counting towards professional qualifications or registration. It could **give you an edge** when applying for your first job or mean a higher starting salary.²

Some of our courses share a **common first year**. This will give you the chance to meet, mix and learn with students from other related courses. You could also gain shared skills and knowledge across disciplines – something that can be desirable for employers. You may also be able to **switch courses** at the end of your first year if you decide to change your focus.³ You can see which courses share their first year on pages 88-89.

GRADUATE ATTRIBUTES

It's important to feel confident, prepared and knowledgeable when you take those first steps on your future path after university. To help you get there, we have defined key graduate attributes that will set you up for life and entering the world of work.

We support you to develop these attributes with relevant skills and experiences built into our courses and a variety of personal development opportunities. As a Coventry University graduate, you'll feel ready personally and professionally – able to confidently talk about and apply your knowledge and skills.

ENHANCING FUTURES

We strive to give our graduates a competitive edge. Each year we run a series of free workshops and interactive activities and experiences, designed to provide you with a global outlook and to help develop your employability and entrepreneurial skills. These are conducted separately from your course studies.

RESEARCH-LED

Many of our teaching staff are research-active, based in one of our 16 research centres. This research feeds into our teaching and learning curriculum. You could see first-hand how what you are studying has a real impact on the world around you.

ACTING ON FEEDBACK

Our most important feedback comes from our students. That's why we have elected course representatives and student governors to help us understand what we're doing well and where we can enhance our offering.

¹ Depending on availability and course and industry requirements.

² We are constantly reviewing our courses to ensure they are up-to-date and relevant, so if the accreditation of any of our courses change, we will notify applicants and students as soon as possible. Please check the relevant course website for up-to-date information on the current status of course accreditations.

³ Subject to degree sharing common first year and meeting academic and any visa requirements.

YOUR POTENTIAL X OUR EXPERIENCE

JOINT TOP MODERN UNIVERSITY FOR CAREER PROSPECTS¹

Your future is our focus. Through our collaborations with global businesses, we aim to offer experiences that give you a competitive edge. We want to help you **stand out from the crowd** and have confidence in your skills, knowledge and direction.

¹ Guardian University Guide 2021 and 2022.



Ugo Obasi

School of Strategy and Leadership

Get an edge

A degree is a big **investment** in your future. That's why from day one our Talent Team provides dedicated support to help you define and **achieve** your career **ambitions**.

The **Talent Team** is our in-house professional careers support service. Available throughout your university journey, its specialist career advisers and coaches will help you find your career passions. Together with your success coach (see page 22), they aim to guide you towards a successful graduate life and help you achieve your personal goals.

Working with local, national and international employers to explore internship and **graduate employment opportunities**, the Talent Team also offers guest speaker sessions, company visits and 'live' projects (all subject to availability). This support is designed to help you build your skills to become a career-ready graduate.

All opportunities¹ are advertised on our one-stop-shop, **Handshake**, including:

- full-time and part-time jobs
- graduate schemes
- placements and internships.

You can also sign up for events and workshops and make one-to-one appointments.

Our courses are also designed around **enhancing your employability**. They aim to help you develop the skills and qualities employers look for, such as:

- entrepreneurial thinking
- good communication
- problem-solving and analytical skills
- a global outlook.



Talent Team offers:²

-  one-to-one support
-  drop-in sessions for CV, application and personal statement checks
-  skills development workshops
-  mock interviews
-  assessment centre and psychometric testing training
-  employer and networking events.

YOUR FREEDOM X OUR GLOBAL OUTLOOK



FIRST IN THE UK FOR OVERSEAS STUDENT EXPERIENCES, SIX YEARS RUNNING¹

Head out on your own adventures and become part of our global community. Our travel, study and language opportunities encourage an international outlook and enhance your prospects, long after graduation.

¹ Based on student trips abroad from HESA 2014/15-2019/20 UK data.

“

I was lucky enough to be a part of the Brussels Field Trip which was very **insightful**. We went on a guided tour of the European Commission which gave me the **awareness** of the key political institutions that shape business operations throughout the EU.

Basyirah Aimi Badruzaman
School of Strategy and Leadership

”

Get a different view



SEE SICILY FIELD TRIP

University is all about **expanding your horizons**. We'll help you to develop personally and professionally, with opportunities to expose yourself to **different perspectives** and experience new things.

As one of our students, you may have the opportunity to spend a semester or a year abroad, with options to study, work (or both), or embark upon **international field trips** or other short-term experiences.¹

But you don't have to leave Coventry to gain global skills and experiences. We use Collaborative Online International Learning (COIL) projects with universities around the world to **connect you** with other students studying your subject.¹ They are also a great opportunity to develop your intercultural competencies by understanding how

the theories and practices you learn are considered around the world.

Other options to develop your **global mindset** could involve learning a new language, visiting multi-national organisations or hearing from internationally renowned speakers – all of which can add real depth to your CV.¹

And as a **multicultural city**, Coventry has welcomed students of more than 150 nationalities. International-themed events run throughout the year on campus, as well as gatherings by student societies.

WWW.COVENTRY.AC.UK/GO-GLOBAL

Supporting you

Get the best out of your university experience with access to our **extensive support network**. We're there to help with a broad range of services and tools, as and **when you need them**.

SUPPORTING YOUR STUDIES

Academic Personal Tutors are your go-to experts for anything to do with your course.

Our **Lanchester Library** is open 24/7, with five floors of study spaces, workstations and learning resources.

IT Services' Tech Bar is based in the library to help you resolve any tech troubles.

The **Centre for Academic Writing** experts are there to help you with assignments and clarify queries.

sigma is our service for all your maths and statistics support. It offers free, expert, one-to-one help for all students on a drop-in or appointment basis, as well as workshops to revise key topics (subject to availability).

SUCCESS COACHES

Access to services – if you need additional support at any point in your academic journey, your success coach will connect you to the right services and specialist teams.

Peer mentoring – your success coach will help you connect with peer networks to help you settle in and access peer-to-peer support.

Managing studies – your success coach will help you to manage your studies so you can stay on the path to success.

Skills development – your success coach can assist you in developing lifelong skills such as resilience, wellbeing, budgeting, confidence and problem-solving, referring you to specialist teams if required.

Experience – prepare for life after university and the transition into the workplace with the support of your success coach.

SUPPORTING YOUR WELLBEING

- Our **Health and Wellbeing Team** is experienced in supporting students with a range of physical and mental conditions. You can chat online or face-to-face to discuss your specific needs.
- The **Student Engagement Team** knows the university better than anyone, so don't be afraid to ask them your questions.
- **Your Students' Union** runs a year-round programme of events, campaigns, advice and personal development opportunities.
- **Welcome and social events** are hosted in university-owned accommodation, helping you make new friends as you settle in.
- The **Spirituality and Faith Centre** can help you foster your faith and community.
- Our **Protection Services Team** is on hand 24/7.
- The **SafeZone app** enables users to call for assistance, giving fast access to university response teams on campus.

SUPPORT FOR YOUR FUTURE

The **Talent Team** provides dedicated careers support to help you develop a competitive edge – find out more on page 16.

thefutureworks will help you earn while you learn, offering temporary and permanent work opportunities.



When I describe the role of a success coach to a student, I often liken it to a running partner in a marathon – we'll run alongside you from the beginning of your journey until the finish line. If you need to pause or slow down along the way, then we'll do the same as you.

Martin Clayden
Student Success Coach



WWW.COVENTRY.AC.UK/SUCCESS





“

The campus is nicely spread out across the city – everywhere is just like 5-15 minutes' walk. My **favourite** place to study is the library, but for nightlife, it's **great** to go out clubbing with your friends at Kasbah at the weekends.

Howard Leek
School of Marketing and Management

”

YOUR
HOME

X

OUR
STUDENT
CITY

**TOP 5 UK
STUDENT CITY¹**

With its rich history and diverse population, our city is a vibrant, affordable, home away from home.

¹ QS Best Student Cities Index 2023.

Cov life

Discovering a new city and making it your home is one of the most **exciting** parts of university life. You'll find there is something for everyone in our young, vibrant city.

FOOD AND DRINK

If you need to stock up on food, you'll find Coventry Market a reasonably priced option for fresh produce. Big supermarkets plus smaller independent stores are all within walking distance of our campus too.

The city's restaurants cater for global tastes and all budgets with food from around the world. Sample British, Middle Eastern, Caribbean, Indian, Chinese, Italian, French, Japanese, Latin American and American cuisines – and dessert parlours too.



ARTS AND CULTURE

Coventry's year as UK City of Culture 2021 resulted in a legacy of regeneration projects and continued investment, so you will find plenty to see and do. The Herbert Art Gallery and Coventry Transport Museum are well worth a visit, and the Belgrade Theatre puts on regular shows.



Top 5 Student City in England for Affordability

QS Best Student Cities Index Ranking Indicators 2023



© Marcus Pendleton

MUSIC AND NIGHTLIFE

The Coventry Building Society Arena in the north of the city has hosted artists including Rihanna, Coldplay and The Killers. The HMV Empire, the Arches and many other independent venues have live music every week. And student nights wouldn't be the same without clubs such as Kasbah, The Yard and JJ's.

STUDENT CITY



40+
sports
clubs



50+
student
societies



Students
from over **150**
nationalities

SHOPPING

You can find major high-street shops at the West Orchards and Lower Precinct shopping centres. FarGo Village is a short walk from campus and home to 40 independent businesses including a craft brewery, artisan food, printing services and a dedicated street food hall.



SPORTS

Whatever your aim, interest or ability, there is something for you at Sport Coventry. A collaboration between Coventry University and Your Students' Union, they provide a range of opportunities and activities aimed at all levels and abilities.

You could get involved at the level that's right for you, from trying something new to representing the university competitively. There are more than 40 sports clubs, many of which compete in the British Universities and Colleges Sport (BUCS) leagues and individual competitions.

www.coventry.ac.uk/sportcoventry



YOUR STUDENTS' UNION

Your Students' Union is run by students for students. It is there for you from the moment you start, right through to graduation.

Welcome weeks – where you can meet, discover and join in with big nights out, quiet nights in, activities and offers to kickstart your university experience.

Societies and sports clubs – so you can try something new or continue something you love while making new friends.

Skills and recognition – a dedicated team to help boost your employability through skills and recognition – examples include Leadership Awards, digital badges and placements.

Elected officers and course reps – to represent your interests and make your voice heard on campus.

Advice service – providing free and confidential advice on any housing, finance or academic issues you may have.

Campaigns and wellbeing – running campaigns for positive change.

Find out more and get involved at yoursu.org

[@covunistudents](https://twitter.com/covunistudents)



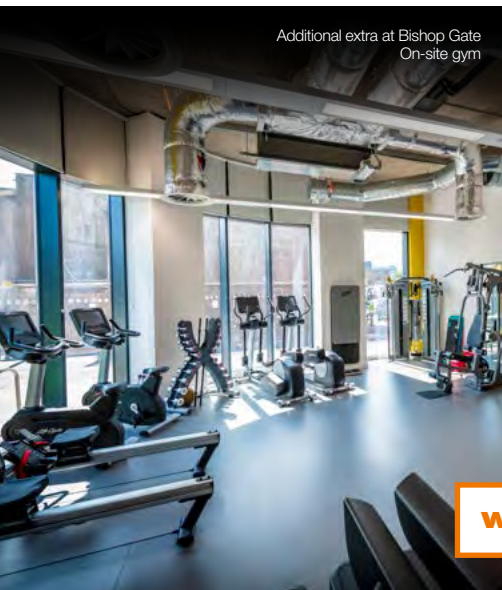
My favourite place to go is definitely FarGo Village. I like going to the independent stores there. They always have the best vintage decorations. It's also nice to just sit down at the café there and do my own study. It's really quiet and the atmosphere is very peaceful.

Ella, Chiu Yu Tsang
Adult Nursing BSc (Hons)





Make yourself at home



Additional extra at Bishop Gate On-site gym

ACCOMMODATION

We offer **guaranteed accommodation** in halls for Coventry University applicants¹.

Bishop Gate – 725 ensuite, twudios and studios in flats of 9 and 10 rooms. Less than 10 minutes from the centre of campus and close to a major supermarket.

The Cycle Works – a mix of 5-12 bedroom flats and studios. All rooms in this hall are ensuite, meaning you'll have your own separate bathroom.

Godiva Place – a mix of 4-12 ensuite bedroom flats, studios and twudios, located just five minutes from the centre of campus.

Our range of accommodation options is designed to be inclusive and accessible to suit your individual needs. If you have any special requirements, let us know when you apply for accommodation online.

WWW.COVENTRY.AC.UK/ACCOMMODATION



Being in the ResLife team is a way for me to contribute to creating a safe environment where you can feel accepted and part of a group. We care about your well-being and love to support you in any possible way.

Maria Fernandez
Media Production student
and ResLife Assistant



GETTING AROUND

Coventry is an easy city to reach, thanks to its central location and excellent transport links. Coventry train station is just a 10-minute walk from campus and currently operates regular services on routes including Birmingham, London, Manchester, Leeds and Bristol, as well as to local stations².

The main coach and bus station is situated next to our campus, with regular services to local and national destinations. The university is just a 15-minute drive from the M6 and M69 motorways, and less than 20 minutes from the M42 and M40.

Flying into London Heathrow airport? We offer a free airport transfer service at www.coventry.ac.uk/airport-transfers.

If you live locally, there are plenty of sheltered bike-locking areas and a student car park on campus. West Midlands Cycle Hire offers bikes and e-bikes to hire 24/7 from docking stations located in the city centre and surrounding areas.

ALL-INCLUSIVE RENT³

Capped costs protect you against energy price rises



Heating, electricity, water



Superfast Wi-Fi



Social spaces, communal TV and study areas



Endsleigh contents insurance



Secure bike storage



24/7 security



On-site laundry facilities (at an additional cost)



Access to ResLife programme of support and social events

SETTLING IN

Our Residence Life team, ResLife is there to ensure you can access all the help, support and resources you need whilst living in university-owned halls.

They do this by:

- providing you with access to a wide range of health and wellbeing support
- organising social events and away days
- providing you with opportunities to learn new life skills
- creating a safe and welcoming community where you can make new friends and feel at home.

Our accommodation was shortlisted in the Property Week **Student Accommodation Awards 2022** for:

- Health and Wellbeing Initiative
- University Halls of Residence Award
- University Team of the Year

DID YOU KNOW WE ALSO HAVE A PRESENCE IN THE CAPITAL?

Coventry University London offers a range of globally focused courses in business, management, marketing, fashion, hospitality and tourism, and economics, accounting and finance. Find out more at www.coventry.ac.uk/london.



Course listings

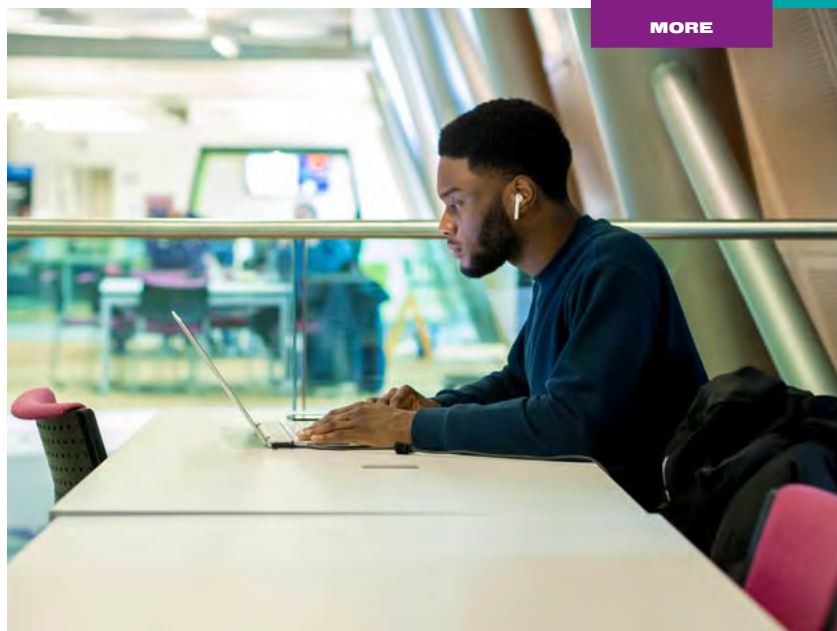
FOUNDATION YEARS

If you need additional support or qualifications to meet the entry requirements for your chosen course, then a foundation year with us could be the stepping stone you need to reach your goals.

A foundation year provides an entry route into degree-level study and is a great way to build the confidence, skills and knowledge needed to start a degree course.

FIND OUT

MORE



- 34 Art, Design and Fashion**
Architecture and Interior Design
Art and Design
Automotive and Product Design
Fashion
- 38 Biomedical, Food and Forensic Sciences**
Biomedical and Forensic Sciences
Food, Nutrition and Dietetics
- 40 Business, Management and Marketing**
Business and Management
Marketing
Sport, Events and Tourism Management
- 44 Computer Science and Games**
Computer Science
Games
- 46 Economics, Finance and Accounting**
Accounting and Finance
Economics
- 50 Engineering and Construction**
Aerospace Engineering and Aviation Management
Automotive and Motorsport Engineering
Electrical and Electronic Engineering
Mechanical and Manufacturing Engineering
Civil Engineering
Construction
- 54 English and Languages**
- 56 Geography and Environment**
- 58 History, Philosophy, Politics and International Relations**
- 62 Law and Criminology**
Law
Criminology and Forensic Investigations
- 64 Mathematics, Physics and Data Science**
- 66 Media and Journalism**
Film and Photography
Media and Journalism
- 68 Music and Performance**
- 72 Nursing, Midwifery and Healthcare**
Nursing and Midwifery
Healthcare Professions
- 74 Psychology and Social Studies**
Childhood, Youth and Education
Psychology
Social Work
Sociology
- 76 Sport**
Sports, Exercise and Therapy Sciences
Management
- 78 Top-up courses**

Art, Design and Fashion

Courses	A level	BTEC	GCSE
Foundation Diploma in Art, Design and Media[†] Direct entry: AHF001 www.coventry.ac.uk/ug/AHF001	C	M	Minimum five graded 9-4 including Art and Design, English and Maths
Architecture and Interior Design			
Architecture BSc (Hons)^{1,2} UCAS: K100 / Int: AHU120 www.coventry.ac.uk/ug/K100	ABB	DDD	Minimum five graded 9-4 including Art and Design, English and Maths
Interior Architecture and Design BA (Hons)³ UCAS: W250 / Int: AHU121 www.coventry.ac.uk/ug/W250	BBC	DMM	Minimum five graded 9-4 including English and Maths
Art and Design			
Animation BA (Hons) UCAS: WW27 / Int: AHU100 www.coventry.ac.uk/ug/WW27	BBC	DMM	Minimum five graded 9-4 including English
Digital Media BA (Hons) UCAS: P479 / Int: AHU096 www.coventry.ac.uk/ug/P479	BBC	DMM	Minimum five graded 9-4 including English and Maths
Fine Art BA (Hons) UCAS: W100 / Int: AHU093 www.coventry.ac.uk/ug/W100	BBC	DMM	Minimum five graded 9-4 including English
Games Art BA (Hons) UCAS: W280 / Int: AHU098 www.coventry.ac.uk/ug/W280	BBB	DDM	Minimum five graded 9-4 including English
Games Design and Development BA (Hons) UCAS: W285 / Int: AHU099 www.coventry.ac.uk/ug/W285	BBC	DDM	Minimum five graded 9-4 including English
Graphic Design BA (Hons) UCAS: W211 / Int: AHU090 www.coventry.ac.uk/ug/W211	BBC	DMM	Minimum five graded 9-4 including English
Illustration BA (Hons)⁴ UCAS: W225 / Int: AHU094 www.coventry.ac.uk/ug/W225	BBC	DMM	Minimum five graded 9-4 including English
Photography BA (Hons) UCAS: W640 / Int: AHU095 www.coventry.ac.uk/ug/W640	BBB	DDM	Minimum five graded 9-4 including English
Visual Effects (VFX) BA (Hons) UCAS: W614 / Int: AHU097 www.coventry.ac.uk/ug/W614	BBC	DMM	Minimum five graded 9-4 including English and Maths

Explore, play and be creative while learning and developing new skills on our Art, Design and Fashion courses. Our approach to your learning and the way in which we deliver teaching is supported by an open and inclusive environment that fosters sharing, collaboration and innovation.

Whatever your creative ambitions, we are there to support you. Our courses are closely aligned with their specific and related global creative industries in a supportive environment that allows you to share, test, experiment and make friends. Join us and realise your talent, creativity and potential.

KEY FEATURES

- New multi-million-pound Delia Derbyshire building – see page 36
- Work on collaborative projects with our network of industry contacts*
- Some courses share a common first year, meaning you could switch degree after your first year (to see which courses, see pages 88-89)
- Annual Degree Show
- Accreditations and memberships that could give you a head start in your career
- Study abroad or placement year opportunities.*

* Please see full placement/study abroad information on page 91. This course content is correct at the time of going to print. We regularly review our course content to make it relevant and current for the benefit of our students. For these reasons, course modules and entry requirements may be updated. 2024 course web pages will go live in summer 2023. Please check individual course pages for further details of facilities. Not all facilities are available for all courses.

Courses	A level	BTEC	GCSE
Automotive and Product Design			
Automotive and Transport Design BA (Hons) UCAS: WHG3 / Int: AHU088 www.coventry.ac.uk/ug/WHG3	BBB	DDM	Minimum five graded 9-4 including English and Maths
Product Design BA (Hons) UCAS: W24D / Int: AHU089 www.coventry.ac.uk/ug/W24D	BBC	DMM	Minimum five graded 9-4 including English
Fashion			
Fashion BA (Hons) UCAS: WN25 / Int: AHU092 www.coventry.ac.uk/ug/WN25	BBC	DMM	Minimum five graded 9-4 including English
Fashion, Brand and Communication BA (Hons) UCAS: W23M / Int: AHU087 www.coventry.ac.uk/ug/W23M	BBC	DMM	Minimum five graded 9-4 including English and Maths
International Fashion Business BA (Hons) UCAS: W23B / Int: AHU091 www.coventry.ac.uk/ug/W23B	BBC	DMM	Minimum five graded 9-4 including English

Related courses: **Architectural Design and Technology** – see page 52, **Architectural Engineering** – see page 52, **Architectural Technology** – see page 52, **Automotive Engineering** – see page 50, **Interactive Media and Web Technologies** – see page 44, **Games Technology** – see page 45

Duration: 3 years full-time or 4 years sandwich if available. † 1 year full-time. Int: denotes International code.



Accreditations and memberships that may apply – see page 12 for details on accreditations. Please check the relevant course web page for up-to-date information on the current accreditation status.

LEARN

MORE



Delia Derbyshire

The multi-million-pound **Delia Derbyshire building** is a game-changing investment for the university. It represents a huge vote of confidence in what we believe you can achieve.

Delia Derbyshire was a Coventry-born electronic music pioneer. A key member of the BBC Radiophonic Workshop, she created the iconic theme music for the BBC's Doctor Who programme in 1962. The new facilities are designed to encourage the same spirit of **trail-blazing creativity** in you.

Since 1843, we've been encouraging inspirational **do-ers, makers and thinkers** to change the world. As designers, artists, performers, producers, academics and writers we understand that change makes us look differently at problems, challenging us to find new solutions and outcomes.



THE DEGREE SHOW

Our annual degree show is your time to shine!

The degree show is designed to spotlight your talent and commitment, celebrating everything that's brought you to this point and opening the door to the next stage of your professional creative journey.

From comment to creation, photography to philosophies, drama to design – all your hard work, passion, focus and dedication come together in one place.

DEGREE
SHOW



The building opens up possibilities for collaborative practices, projects and programmes across the university. We hope it empowers you to play and engage with your course in innovative new ways.

THE NINE FLOORS INCLUDE:

- immersive studios for sound and vision (AR, VR and XR) encased in a suspended unit, the centrepiece of the building
- a hyper-studio, for large-scale experimental and collaborative projects
- photography and film production facilities, hack labs, post-production and games suites
- interconnected creative practice studios that mirror professional environments
- light, airy workshops and a dedicated fashion floor, with industry-standard resources and integrated technical support
- computer labs, fabrication and making spaces for collaborative open-access working
- open social learning spaces
- a street-level exhibition space, opening your work to the public.

If your imagination and creativity know no bounds and you're ready to explore, advance and challenge what you think you know – you're in the right place. We're here to create a better future for you.



SEE
MORE

Biomedical, Food and Forensic Sciences

Courses	A level	BTEC	GCSE
Biomedical and Forensic Sciences			
Biological and Forensic Sciences BSc (Hons)¹ UCAS: CF94 / Int: HLSU248 www.coventry.ac.uk/ug/CF94	BBC [†]	DMM [†]	Minimum five graded 9-4 including English, Maths and two Sciences
Biomedical Science² / Applied Biomedical Science BSc (Hons)^{** 2,3} UCAS: B940 / Int: HLSU249 www.coventry.ac.uk/ug/B940	BBB [†]	DDM [†]	Minimum five graded 9-4 including English, Maths and two Sciences
Forensic Science BSc (Hons) UCAS: F412 / Int: HLSU255 www.coventry.ac.uk/ug/F412	BBC [†]	DMM [†]	Minimum five graded 9-4 including English, Maths and two Sciences
Human Biosciences BSc (Hons)¹ UCAS: C110 / Int: HLSU250 www.coventry.ac.uk/ug/C110	BBB [†]	DDM [†]	Minimum five graded 9-4 including English, Maths and two Sciences
Pharmacology BSc (Hons)¹ UCAS: BB92 / Int: HLSU251 www.coventry.ac.uk/ug/BB92	BBB [†]	DDM [†]	Minimum five graded 9-4 including English, Maths and two Sciences
Food, Nutrition and Dietetics			
Dietetics BSc (Hons)^{‡ 3,4} UCAS: B410 / Int: HLSU221 www.coventry.ac.uk/ug/B410	ABB [†]	DDM [†]	Minimum five graded 9-4 including English and Maths
Food Safety, Inspection and Control BSc (Hons)⁵ UCAS: D600 / Int: HLSU253 www.coventry.ac.uk/ug/D600	BBC [†]	DMM [†]	Minimum five graded 9-4 including English, Maths and two Sciences
Food Science BSc (Hons)⁶ UCAS: DB64 / Int: HLSU252 www.coventry.ac.uk/ug/DB64	BBC [†]	DMM [†]	Minimum five graded 9-4 including English, Maths and two Sciences
Nutrition and Health BSc (Hons)⁷ UCAS: B400 / Int: HLSU254 www.coventry.ac.uk/ug/B400	BBB [†]	DDM [†]	Minimum five graded 9-4 including English, Maths and two Science

Related courses: **Forensic Investigations** – see page 62, **Forensic Psychology** – see page 74

Duration: 3 years full-time or 4 years sandwich. ‡ 3 years full-time. † Subject-specific requirements at A level/BTEC. Int: denotes International code.

A passion for life sciences could lead to an exciting career in medical research, drug development, healthcare, the food industry or solving crime.

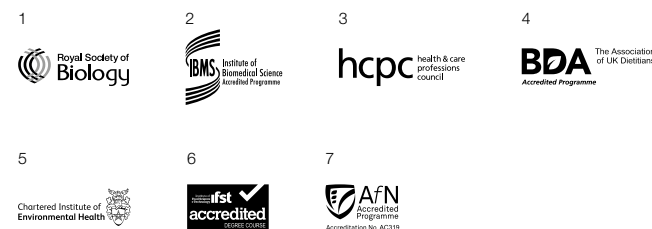
We aim to fuel your scientific curiosity and equip you with the skills to investigate key questions in contemporary science.

The multi-million-pound Alison Gingell Building is home to the Superlab which can hold 250+ students and our forensic science students use our two full-size community houses to simulate crime scenes. This means you could work in a professional environment from day one, gaining hands-on experience using industry-standard techniques.

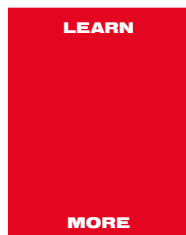
KEY FEATURES

- Well-equipped suite of analytical and biological laboratories
- Some courses share a common first year, meaning you could switch degree after your first year (to see which courses, see pages 88-89)
- Accreditations and memberships that could give you a head start in your career
- Study abroad or placement year opportunities*
- UK and international field trips* – previous trips include Amsterdam, Girona, Antwerp and The Hague
- International 'Freezer Challenge' award in 2022 for reducing energy usage and carbon footprint.

* Please see full placement/study abroad information on page 91. ** Students who undertake a 12-month placement in an approved laboratory and complete a training portfolio may then be transferred onto Applied Biomedical Sciences BSc (Hons) for the final year of study. Upon graduation, they are eligible to apply for HCPC registration and biomedical scientist roles (additional costs may apply). This course content is correct at the time of going to print. We regularly review our course content to make it relevant and current for the benefit of our students. For these reasons, course modules and entry requirements may be updated. 2024 course web pages will go live in summer 2023. Please check individual course pages for further details of facilities. Not all facilities are available for all courses.



Accreditations and memberships that may apply – see page 12 for details on accreditations. Please check the relevant course web page for up-to-date information on the current accreditation status.



Business, Management and Marketing

Courses	A level	BTEC	GCSE
Business and Management			
Business Administration BBA (Hons) ^{1,2} UCAS: N250 / Int: FBLU083 www.coventry.ac.uk/ug/N250	BBC	DMM	Minimum five graded 9-4 including English and Maths
Business and Finance BSc (Hons) ^{1,2,3} UCAS: N290 / Int: FBLU100 www.coventry.ac.uk/ug/N290	BCC	DMM	Minimum five graded 9-4 including English and Maths
Business and Human Resource Management BA (Hons) ^{1,2,4} UCAS: N600 / Int: FBLU099 www.coventry.ac.uk/ug/N600	BBC	DMM	Minimum five graded 9-4 including English and Maths
Business and Marketing BA (Hons) ^{1,2,5} UCAS: NNF5 / Int: FBLU097 www.coventry.ac.uk/ug/NNF5	BBC	DMM	Minimum five graded 9-4 including English and Maths
Business Economics BSc (Hons) ^{1,2,3} UCAS: L112 / Int: FBLU087 www.coventry.ac.uk/ug/L112	BCC	DMM	Minimum five graded 9-4 including English and Maths
Business Management BA (Hons) ^{1,2} UCAS: N221 / Int: FBLU082 www.coventry.ac.uk/ug/N221	BBB	DDM	Minimum five graded 9-4 including English and Maths
Enterprise and Entrepreneurship BA (Hons) ^{1,2} UCAS: NN1F / Int: FBLU085 www.coventry.ac.uk/ug/NN1F	BBC	DMM	Minimum five graded 9-4 including English and Maths
International Business Management BSc (Hons) ^{1,2} UCAS: N120 / Int: FBLU084 www.coventry.ac.uk/ug/N120	BBC	DMM	Minimum five graded 9-4 including English and Maths
Marketing			
Advertising and Digital Marketing BA (Hons) ^{1,2,5} UCAS: N590 / Int: FBLU098 www.coventry.ac.uk/ug/N590	BBB	DDM	Minimum five graded 9-4 including English and Maths
Business and Marketing BA (Hons) ^{1,2,5} UCAS: NNF5 / Int: FBLU097 www.coventry.ac.uk/ug/NNF5	BBC	DMM	Minimum five graded 9-4 including English and Maths
Marketing BA (Hons) ^{1,2,5} UCAS: N500 / Int: FBLU096 www.coventry.ac.uk/ug/N500	BBB	DDM	Minimum five graded 9-4 including English and Maths

Businesses need brilliant minds. With a track record for business education spanning more than 50 years, our courses present great opportunities to prepare for the real world.

Designed to challenge you academically, our courses have a global outlook as well as a strong focus on gaining experience in working practices and solving real-world problems.

So, whether you want a career in a multinational firm, or to start your own business, our courses can help you make an impact.

KEY FEATURES

- Some courses share a common first year, meaning you could switch degree after your first year (to see which courses, see pages 88-89)
- Accreditations and memberships that could give you a head start in your career
- Annual student conference and guest speakers, including industry experts and alumni*
- Access to the Business Simulation Suite and DigiComm Lab (depending on your course)
- Study abroad or placement year opportunities*
- UK and international field trips* – recent trips include New York.

* Please see full placement/study abroad information on page 91. This course content is correct at the time of going to print. We regularly review our course content to make it relevant and current for the benefit of our students. For these reasons, course modules and entry requirements may be updated. 2024 course web pages will go live in summer 2023. Please check individual course pages for further details of facilities. Not all facilities are available for all courses.

Courses	A level	BTEC	GCSE
Sport, Events and Tourism Management			
Aviation Management BSc (Hons) ⁷ UCAS: HG67 / Int: EECU172 www.coventry.ac.uk/ug/HG67	BBC+	DMM	Minimum five graded 9-4 including English and Maths
Event Management BA (Hons) ^{1,2} UCAS: N821 / Int: FBLU102 www.coventry.ac.uk/ug/N821	BBC	DMM	Minimum five graded 9-4 including English and Maths
Sport Management BA (Hons) ^{1,2} UCAS: N285 / Int: FBLU101 www.coventry.ac.uk/ug/N285	BBC	DMM	Minimum five graded 9-4 including English and Maths

Related courses: **Information Technology Management** – see page 44, **International Fashion Business** – see page 35, **Real Estate and Property Management** – see page 52, **Renewable Energy** – see page 52

Duration: 3 years full-time or 4 years sandwich. Int: denotes International code.



LEARN
MORE

Accreditations and memberships that may apply – see page 12 for details on accreditations. Please check the relevant course web page for up-to-date information on the current accreditation status.

Games at Coventry University

TURN YOUR PASSION INTO A CAREER WITH ONE OF OUR INDUSTRY-RELEVANT DEGREES.

Study in the heart of the fastest-growing **gaming talent pool** outside of London. The West Midlands is currently responsible for 25% of the UK's games output and Leamington Spa – also known as 'Silicon Spa' – is right on our doorstep. Home to companies such as Codemasters, Exient, Ubisoft Leamington and Playground Games, it has produced titles such as Far Cry 5, Fable, Formula 1 and Forza Horizon.

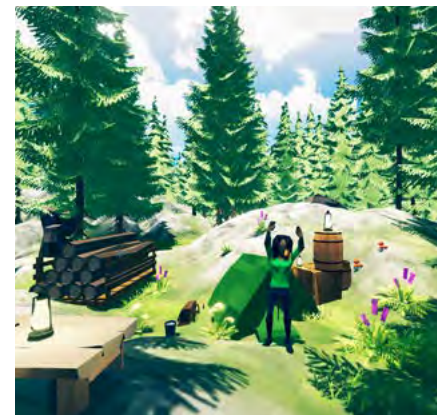
Our suite of courses is designed to **help launch and develop your career** in the games industry. Whether your interests lie in coding, programming, design, development, art, animation or augmented reality (AR) and virtual reality (VR), you could benefit from our industry links and level up your career aspirations.



The course definitely prepared me for the work I am doing right now. It taught me a lot, creating assets and environments. I can comfortably create my own scenes from my imagination.

Manjot Singh

Games Art BA (Hons) graduate



1ST FOR OVERALL SATISFACTION IN COMPUTER GAMES AND ANIMATION

Compared with other HEIs that offer this subject, National Student Survey (NSS) 2022

COURSES

- Animation BA (Hons)
- Digital Media BA (Hons)
- Games Art BA (Hons)
- Games Design and Development BA (Hons)
- Games Technology MSci or BSc (Hons)
- Graphic Design BA (Hons)
- Illustration BA (Hons)
- Interactive Media and Web Technologies BSc (Hons)
- Visual Effects (VFX) BA (Hons)

THE LATEST KIT*

Games Technology lab – high-end gaming PCs with the capacity to run industry-standard games engines and programming environments. It also supports VR game development.

Mac lab – complete with Apple Mac desktops and a recording studio with green screen. Cameras and multimedia production equipment available to borrow (subject to availability).

Delia Derbyshire building – immersive studios for sound and vision (AR, VR and extended reality (XR)), hack labs, post-production and games suites as well as computer labs. Find out more on page 36.

INSPIRING YOU

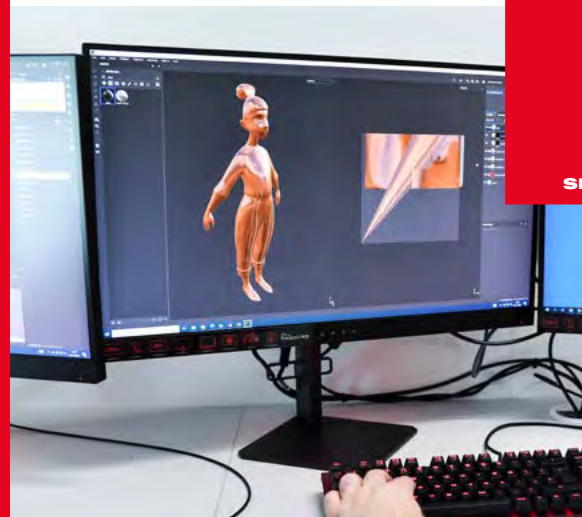
Guest speakers are a great way to give you first-hand insight into your chosen industry*. They can provide valuable insights into how best to prepare for the graduate market, with an emphasis on building lasting relationships within the gaming community.

LEARN, CREATE AND PLAY*

- Annual Degree Show
- Local and global games jams
- Hackathons
- Insomnia Gaming Festival
- Formula Student AI – tasks teams to develop autonomous driving systems
- Talent Showcase – celebrates the most innovative and interesting student projects

DEGREE

SHOW



* Please see full placement/study abroad information on page 91. Please check individual course pages for further details of facilities. Not all facilities are available for all courses.

Computer Science and Games

Courses	A level	BTEC	GCSE
Computer Science			
Computer Science BSc (Hons) UCAS: G400 / Int: EECU142 www.coventry.ac.uk/ug/G400	BBB [†]	DDM [†]	Minimum five graded 9-4 including English and Maths
Computer Science MSci UCAS: I108 / Int: EECU143 www.coventry.ac.uk/ug/I108	ABB [†]	DDD [†]	Minimum five graded 9-4 including English and Maths
Computer Science with Artificial Intelligence BSc (Hons)¹ UCAS: G401 / Int: EECU154 www.coventry.ac.uk/ug/G401	BBB [†]	DDM [†]	Minimum five graded 9-4 including English and Maths
Computer Science with Artificial Intelligence MSci¹ UCAS: G402 / Int: EECU155 www.coventry.ac.uk/ug/G402	ABB [†]	DDD [†]	Minimum five graded 9-4 including English and Maths
Computer Systems Engineering BEng (Hons)^{1,2,3} UCAS: GG56 / Int: EECU136 www.coventry.ac.uk/ug/GG56	BBB [†]	DMM [†]	Minimum five graded 9-4 including English and Maths Computer Systems
Computer Systems Engineering MEng (Hons)^{1,2,3} UCAS: G410 / Int: EECU175 www.coventry.ac.uk/ug/G410	ABB [†]	DDD [†]	Minimum five graded 9-4 including English and Maths
Ethical Hacking and Cyber Security BSc (Hons)¹ UCAS: GG45 / Int: EECU140 www.coventry.ac.uk/ug/GG45	BBB [†]	DDM [†]	Minimum five graded 9-4 including English and Maths
Ethical Hacking and Cyber Security MSci¹ UCAS: I120 / Int: EECU139 www.coventry.ac.uk/ug/I120	ABB [†]	DDD [†]	Minimum five graded 9-4 including English and Maths
Information Technology Management BSc (Hons)¹ UCAS: GN51 / Int: EECU144 www.coventry.ac.uk/ug/GN51	BBC [†]	DMM [†]	Minimum five graded 9-4 including English and Maths
Interactive Media and Web Technologies BSc (Hons)¹ UCAS: I150 / Int: EECU152 www.coventry.ac.uk/ug/I150	BBC [†]	DMM [†]	Minimum five graded 9-4 including English and Maths
Software Engineering BSc (Hons)¹ UCAS: G600 / Int: EECU141 www.coventry.ac.uk/ug/G600	BBC [†]	DMM [†]	Minimum five graded 9-4 including English and Maths

Our computing-related courses focus on practical applications in industry, research and everyday life. You can develop a wide range of technical, analytical, design and professional skills, many of which are gained from placement experiences* and practical lab sessions.

We also focus on your future employability. Whether your passion lies in developing software, learning how to prevent cyber-attacks or creating games or mobile apps, we aim to have the right course for you.

KEY FEATURES

- CISCO, cyber security, ethical hacking, games technology, mathematics, Mac, parallel programming testbed and virtual labs
- High-performance gaming lab, specialist PC labs and a VR gaming recording studio
- Programming Support Centre to give you extra help when you need it
- Annual Games Jam event*
- Some courses share a common first year, meaning you could switch degree after your first year (to see which courses, see pages 88-89)
- Accreditations that could give you a head start in your career
- Study abroad or placement year opportunities.*

* Please see full placement/study abroad information on page 91. This course content is correct at the time of going to print. We regularly review our course content to make it relevant and current for the benefit of our students. For these reasons, course modules and entry requirements may be updated. 2024 course web pages will go live in summer 2023. Please check individual course pages for further details of facilities. Not all facilities are available for all courses.

Courses	A level	BTEC	GCSE
Games			
Games Art BA (Hons) UCAS: W280 / Int: AHU098 www.coventry.ac.uk/ug/W280	BBB	DDM	Minimum five graded 9-4 including English
Games Design and Development BA (Hons) UCAS: W285 / Int: AHU099 www.coventry.ac.uk/ug/W285	BBC	DMM	Minimum five graded 9-4 including English
Games Technology BSc (Hons)¹ UCAS: G454 / Int: EECU138 www.coventry.ac.uk/ug/G454	BBC [†]	DMM [†]	Minimum five graded 9-4 including English and Maths
Games Technology MSci¹ UCAS: G455 / Int: EECU177 www.coventry.ac.uk/ug/G455	ABB [†]	DDM [†]	Minimum five graded 9-4 including English and Maths

Related courses: **Animation** – see page 34, **Data Science** – see page 64, **Electronics and Communication Engineering** – see page 51, **Visual Effects (VFX)** – see page 66

Duration: 3 years full-time or 4 years sandwich. MSci 4 years full-time or 5 years sandwich. † Subject-specific requirements at A level/BTEC. Int: denotes International code.



1



2



3



LEARN

MORE

Accreditations and memberships that may apply – see page 12 for details on accreditations. Please check the relevant course web page for up-to-date information on the current accreditation status.

Economics, Finance and Accounting

Courses	A level	BTEC	GCSE
Accounting and Finance			
Accountancy BSc (Hons) ^{1,2,3,4,5,6} UCAS: N410 / Int: FBLU080 www.coventry.ac.uk/ug/N410	BBB	DDM	Minimum five graded 9-4 including English and Maths
Accounting and Finance BSc (Hons) ^{1,2,3,4,5,6} UCAS: NN34 / Int: FBLU081 www.coventry.ac.uk/ug/NN34	BBC	DMM	Minimum five graded 9-4 including English and Maths
Banking and Finance BSc (Hons) ^{4,5,6} UCAS: N310 / Int: FBLU091 www.coventry.ac.uk/ug/N310	BBB	DDM	Minimum five graded 9-4 including English and Maths
Business and Finance BSc (Hons) ^{4,5,6} UCAS: N290 / Int: FBLU100 www.coventry.ac.uk/ug/N290	BCC	DMM	Minimum five graded 9-4 including English and Maths
Finance and Investment BSc (Hons) ^{4,5,6} UCAS: N300 / Int: FBLU089 www.coventry.ac.uk/ug/N300	BBC	DMM	Minimum five graded 9-4 including English and Maths
Global Financial Planning BSc (Hons) ^{4,5,6} UCAS: N341 / Int: FBLU090 www.coventry.ac.uk/ug/N341	BBC	DMM	Minimum five graded 9-4 including English and Maths
Economics			
Business Economics BSc (Hons) ^{4,5,6} UCAS: L112 / Int: FBLU087 www.coventry.ac.uk/ug/L112	BCC	DMM	Minimum five graded 9-4 including English and Maths
Economics BSc (Hons) ^{4,5,6} UCAS: L100 / Int: FBLU086 www.coventry.ac.uk/ug/L100	BBB	DDM	Minimum five graded 9-4 including English and Maths
Financial Economics BSc (Hons) ^{4,5,6} UCAS: L111 / Int: FBLU088 www.coventry.ac.uk/ug/L111	BBC	DMM	Minimum five graded 9-4 including English and Maths

Related courses: **Quantity Surveying and Commercial Management** – see page 52

Duration: 3 years full-time or 4 years sandwich. Int: denotes International code.

An economics, finance or accounting degree could create a wealth of career opportunities for you.

From large international corporations to local businesses and not-for-profit organisations, graduates who understand accounting, financial management or economics can add value to many organisations.

Our focus is on helping you to unlock these opportunities with courses that aim to give you the professional skills and knowledge you require to succeed.

KEY FEATURES

- Some courses share a common first year, meaning you could switch degree after your first year (to see which courses, see pages 88-89)
- Accreditations and memberships that could give you a head start in your career with some providing exemptions for professional qualifications
- Bloomberg trading suite – one of the largest academic trading floors in Europe
- Mentoring scheme with industry professionals*
- Study abroad or placement year opportunities*
- UK and international field trips which have recently included the Houses of Parliament, New York and Poland.*

* Please see full placement/study abroad information on page 91. This course content is correct at the time of going to print. We regularly review our course content to make it relevant and current for the benefit of our students. For these reasons, course modules and entry requirements may be updated. 2024 course web pages will go live in summer 2023. Please check individual course pages for further details of facilities. Not all facilities are available for all courses.



Accreditations and memberships that may apply – see page 12 for details on accreditations. Please check the relevant course web page for up-to-date information on the current accreditation status.

LEARN

MORE

Engineering your future



Coventry has a long history of **engineering excellence** from James Starley, father of the bicycle industry to aeronautical engineers Beatrice Shilling and Frank Whittle. We're proud to continue that legacy.

Everything we do is designed to help you become a **creative, ethical, research-informed and industry-ready** graduate engineer.

You can see our engineering courses on pages 50-53. With so many options, coming to an open day is one of the best ways to find the right course for you. Talk to our expert staff and current students and see our excellent facilities for yourself. www.coventry.ac.uk/opendays

WHY CHOOSE AN MEng?

Some of our courses offer the option of an MEng – an additional year that extends your undergraduate studies to master's level. The additional depth of knowledge, experience and leadership skills gained during the MEng year can really **help you stand out to employers** and could also help you attract a higher salary.

For many of our accredited engineering courses, studying the MEng year also offers the fastest route to meeting the educational requirements for registration as a Chartered Engineer. This registration could help open opportunities for progressing to senior roles, greater responsibility and a higher salary.



INDUSTRY-INFORMED

Our course content responds to the industry's demand for innovative engineers with strong analytical and problem-solving skills.

- Industry-related projects aim to give you the experience of workplace demands and expectations
- Apply your knowledge and skills on a placement year in industry*
- Exhibitions and competitions* – Shell Eco Marathon, Formula Student.

FACULTY ON THE FACTORY FLOOR*

Manufacturing engineering students benefit from use of the Institute for Advanced Manufacturing and Engineering (AME), based at Unipart's Coventry site. This 'Faculty on the Factory Floor' allows you to experience technology on the manufacturing front line – robotic automation, industry 4.0, forming, joining, analysis and simulation, metrology and product verification technology.

SPECIALIST FACILITIES*

- Flight simulation suite and Harrier jet
- Civil engineering workshop, composites facility and environmental chamber
- Electronics and electrical power, microelectronics and project labs
- Simulation Centre
- Industry-standard software

High Performance Engineering Centre includes:

- 1/5th scale Mercedes Petronas AMG wind tunnel
- Full-motion Cruden F1 simulator
- Cosworth PI data analysis
- Engine test cell
- Full-size vehicle shaker rig
- Metrology and composites material laboratory
- A suite of CNC machining cells and model shops which include composite 3D printers, laser-cutting, vacuum-forming and more.



GRADUATE

STORY

* Please see full placement/study abroad information on page 91. Please check individual course pages for further details of facilities. Not all facilities are available for all courses.

Engineering and Construction

Courses	A level	BTEC	GCSE
Aerospace Engineering and Aviation Management			
Aerospace Systems Engineering BEng (Hons) ^{1,2,3} UCAS: H410 / Int: EECU159 www.coventry.ac.uk/ug/H410	BBB [†]	DDM [†]	Minimum five graded 9-4 including English and Maths
Aerospace Systems Engineering MEng ^{2,3} UCAS: H411 / Int: EECU163 www.coventry.ac.uk/ug/H411	ABB [†]	D*DD [†]	Minimum five graded 9-4 including English and Maths
Aerospace Technology BEng (Hons) ^{1,2,3} UCAS: H402 / Int: EECU157 www.coventry.ac.uk/ug/H402	BBC [†]	DMM [†]	Minimum five graded 9-4 including English and Maths
Aviation Management BSc (Hons) ³ UCAS: HG67 / Int: EECU172 www.coventry.ac.uk/ug/HG67	BBC [†]	DMM	Minimum five graded 9-4 including English and Maths
Automotive and Motorsport Engineering			
Automotive Engineering BEng (Hons) ^{2,3} UCAS: H343 / Int: EECU158 www.coventry.ac.uk/ug/H343	BBB [†]	DDM [†]	Minimum five graded 9-4 including English and Maths
Automotive Engineering MEng ^{2,3} UCAS: H345 / Int: EECU165 www.coventry.ac.uk/ug/H345	ABB [†]	D*DD [†]	Minimum five graded 9-4 including English and Maths
Motorsport Engineering BEng (Hons) ^{2,3} UCAS: H335 / Int: EECU160 www.coventry.ac.uk/ug/H335	BBB [†]	DDM [†]	Minimum five graded 9-4 including English and Maths
Motorsport Engineering MEng ^{2,3} UCAS: H340 / Int: EECU170 www.coventry.ac.uk/ug/H340	ABB [†]	D*DD [†]	Minimum five graded 9-4 including English and Maths

Be part of the next generation of highly skilled, specialist engineers. Industry-related projects aim to give you the experience of workplace demands and expectations, as well as enable you to practise and apply your skills to real engineering projects.

Working with our expert staff and dedicated technicians, you'll focus on real-world problems as you develop your technical skills and professional practice. Use our facilities and space to explore your engineering passions independently so you can become a research-informed, industry-ready graduate.

KEY FEATURES

- Some courses share a common first year, meaning you could switch degree after your first year (to see which courses, see pages 88-89)
- Accreditations and memberships could give you a head start in your career or put you on the road to chartership
- Industry-standard High Performance Engineering Centre, model shops, 1/5th scale Mercedes AMG Petronas wind tunnel, aero and vehicle sims and more
- Specialist facilities including metrology, microelectronics, rapid prototyping and power labs
- Industry Advisory Boards ensure our courses reflect the latest industry practices and innovations
- Study abroad or placement year opportunities*
- UK and international field trips, competitions and more.*

* Please see full placement/study abroad information on page 91. This course content is correct at the time of going to print. We regularly review our course content to make it relevant and current for the benefit of our students. For these reasons, course modules and entry requirements may be updated. 2024 course web pages will go live in summer 2023. Please check individual course pages for further details of facilities. Not all facilities are available for all courses.

Courses	A level	BTEC	GCSE
Electrical and Electronic Engineering			
Computer Systems Engineering BEng (Hons) ^{2,3,4} UCAS: GG56 / Int: EECU136 www.coventry.ac.uk/ug/GG56	BBB [†]	DMM [†]	Minimum five graded 9-4 including English and Maths
Computer Systems Engineering MEng ^{2,3,4} UCAS: G410 / Int: EECU175 www.coventry.ac.uk/ug/G410	ABB [†]	DDD [†]	Minimum five graded 9-4 including English and Maths
Electrical and Electronic Engineering BEng (Hons) ^{2,3,4} UCAS: H600 / Int: EECU132 www.coventry.ac.uk/ug/H600	BBB [†]	DDM [†]	Minimum five graded 9-4 including English and Maths
Electrical and Electronic Engineering MEng ^{2,3,4} UCAS: H610 / Int: EECU131 www.coventry.ac.uk/ug/H610	ABB [†]	DDD [†]	Minimum five graded 9-4 including English and Maths
Electronics and Communication Engineering BEng (Hons) ^{2,3,4} UCAS: H601 / Int: EECU135 www.coventry.ac.uk/ug/H601	BBB [†]	DDM [†]	Minimum five graded 9-4 including English and Maths
Electronics and Communication Engineering MEng ^{2,3,4} UCAS: H679 / Int: EECU133 www.coventry.ac.uk/ug/H679	ABB [†]	DDD [†]	Minimum five graded 9-4 including English and Maths
Mechanical and Manufacturing Engineering			
Manufacturing Engineering BEng (Hons) ^{3,4} UCAS: H700 / Int: EECU173 www.coventry.ac.uk/ug/H700	BBC [†]	DMM [†]	Minimum five graded 9-4 including English and Maths
Manufacturing Engineering MEng ^{3,4} UCAS: H702 / Int: EECU174 www.coventry.ac.uk/ug/H702	ABB [†]	D*DD [†]	Minimum five graded 9-4 including English and Maths
Mechanical Engineering BEng (Hons) ^{2,3} UCAS: H300 / Int: EECU161 www.coventry.ac.uk/ug/H300	BBB [†]	DDM [†]	Minimum five graded 9-4 including English and Maths
Mechanical Engineering MEng ^{2,3} UCAS: H303 / Int: EECU168 www.coventry.ac.uk/ug/H303	ABB [†]	D*DD [†]	Minimum five graded 9-4 including English and Maths

Related courses: **Automotive and Transport Design** – see page 35

Duration: 3 years full-time or 4 years sandwich if available. MEng 4 years full-time or 5 years sandwich. † Subject-specific requirements at A level/BTEC. Int: denotes International code.

1



2



3



4



LEARN

MORE

Engineering and Construction (continued)

Courses	A level	BTEC	GCSE
Civil Engineering			
Civil and Environmental Engineering BEng (Hons)¹ UCAS: H220 / Int: EECU124 www.coventry.ac.uk/ug/H220	BBC [†]	DMM [†]	Minimum five graded 9-4 including English and Maths
Civil Engineering BSc (Hons)¹ UCAS: H203 / Int: EECU123 www.coventry.ac.uk/ug/H203	CCC [†]	MMM [†]	Minimum five graded 9-4 including English and Maths
Civil Engineering BEng (Hons)¹ UCAS: H200 / Int: EECU122 www.coventry.ac.uk/ug/H200	BBC [†]	DMM [†]	Minimum five graded 9-4 including English and Maths
Civil Engineering MEng (Hons)¹ UCAS: H202 / Int: EECU121 www.coventry.ac.uk/ug/H202	ABB [†]	DDM [†]	Minimum five graded 9-4 including English and Maths
Construction			
Architectural Design and Technology MSci¹ UCAS: K131 / Int: EECU176 www.coventry.ac.uk/ug/K131	ABB	DDM	Minimum five graded 9-4 including English and Maths
Architectural Engineering BEng (Hons)¹ UCAS: H221 / Int: EECU125 www.coventry.ac.uk/ug/H221	BBC [†]	DMM [†]	Minimum five graded 9-4 including English and Maths
Architectural Technology BSc (Hons)¹ UCAS: K130 / Int: EECU116 www.coventry.ac.uk/ug/K130	BBC	DMM	Minimum five graded 9-4 including English and Maths
Building Surveying BSc (Hons)² UCAS: K230 / Int: EECU117 www.coventry.ac.uk/ug/K230	BBC	DMM	Minimum five graded 9-4 including English and Maths
Construction Project Management BSc (Hons)¹ UCAS: K200 / Int: EECU118 www.coventry.ac.uk/ug/K200	BBC	DMM	Minimum five graded 9-4 including English and Maths
Quantity Surveying and Commercial Management BSc (Hons)^{1,2} UCAS: K240 / Int: EECU119 www.coventry.ac.uk/ug/K240	BBC	DMM	Minimum five graded 9-4 including English and Maths
Real Estate and Property Management BSc (Hons)¹ UCAS: N230 / Int: EECU120 www.coventry.ac.uk/ug/N230	BBC	DMM	Minimum five graded 9-4 including English and Maths
Renewable Energy BSc (Hons)¹ UCAS: HN86 / Int: EECU129 www.coventry.ac.uk/ug/HN86	BBC	DMM	Minimum five graded 9-4 including English and Maths

Related courses: **Architecture** – see page 34, **Interior Architecture and Design** – see page 34

Duration: 3 years full-time or 4 years sandwich. MSci 4 years full-time. MEng 4 years full-time or 5 years sandwich. † Subject-specific requirements at A level/BTEC. Int: denotes International code.

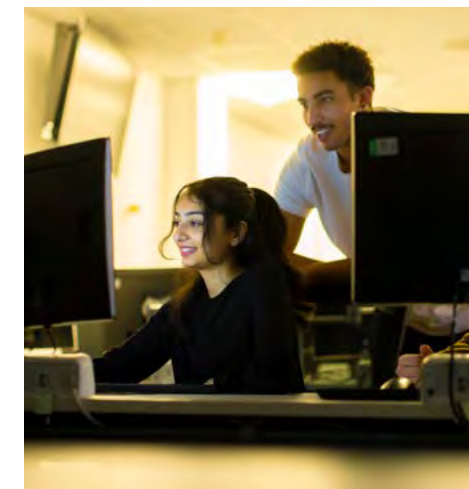
Civil engineers, architects and construction professionals shape the world.

At Coventry University, we explore how the built environment is designed and constructed, how it functions and how it impacts the world we live in.

We design our courses to create industry-ready graduates. You'll have the opportunity to develop technical knowledge, design and professional skills and undertake integrated project work using industry-standard software. Placement experience* is encouraged so you can put theory into practice and further develop your personal and professional skills.

KEY FEATURES

- Civil engineering workshop, composites facility and environmental chamber
- Hydraulics, materials, structures, building services, metrology and geotechnics labs and CAD studios
- Simulation Centre can be used to create a 'virtual' construction site for role-play exercises
- Some courses share a common first year, meaning you could switch degree after your first year (to see which courses, see pages 88-89)
- Accreditations and memberships that could give you a head start in your career
- Industry Advisory Boards ensure our courses reflect the latest industry practices and innovations
- Study abroad or placement year opportunities.*



1



2



* Please see full placement/study abroad information on page 91. This course content is correct at the time of going to print. We regularly review our course content to make it relevant and current for the benefit of our students. For these reasons, course modules and entry requirements may be updated. 2024 course web pages will go live in summer 2023. Please check individual course pages for further details of facilities. Not all facilities are available for all courses.

Accreditations and memberships that may apply – see page 12 for details on accreditations. Please check the relevant course web page for up-to-date information on the current accreditation status.

LEARN

MORE

English

Courses	A level	BTEC	GCSE
English and Creative Writing BA (Hons) UCAS: QW38 / Int: AHU104 www.coventry.ac.uk/ug/QW38	BBC	DMM	Minimum five graded 9-4 including English
English Language and Literature BA (Hons) UCAS: Q300 / Int: AHU103 www.coventry.ac.uk/ug/Q300	BCC	DMM	Minimum five graded 9-4 including English
English and Teaching English as a Foreign Language (TEFL) BA (Hons) UCAS: QX31 / Int: AHU105 www.coventry.ac.uk/ug/QX31	BBC	DMM	Minimum five graded 9-4 including English
English Literature BA (Hons) UCAS: Q311 / Int: AHU106 www.coventry.ac.uk/ug/Q311	BBC	DMM	Minimum five graded 9-4 including English

Related courses: **Journalism** – see page 66

Duration: 3 years full-time or 4 years sandwich. Int: denotes International code.

We see things differently at Coventry University.

Our degrees have been specially designed to help you acquire the knowledge, skills, and experience that are required to succeed in the world of work. From researching and writing essays to making a podcast or curating an exhibition, whatever you do, you'll be drawing on your subject knowledge and seeking to communicate your ideas in innovative and engaging ways.

We embrace digital and other innovative teaching methods and platforms, as well as traditional lectures and seminars. Course teams empower you to work collaboratively, take risks and explore your creativity. TEFL students have worked with Coventry Refugee Centre. Other students have been involved with vlogging, documentary-making and content creation for platforms like YouTube and Twitch as part of assessments or workshops.

KEY FEATURES

- Some courses have a shared common first year, meaning you could switch degree after your first year (to see which courses, see pages 88-89)
- No exams – innovative assessments
- Showcase your work at the Annual Degree Show or in *Cov Words*, our creative writing magazine
- Guest lectures and workshops with poets, playwrights, authors, renowned applied linguists and journalists (subject to availability)
- Study abroad or placement year opportunities*
- UK and international field trips* – recent trips include Sicily and Valencia.



* Please see full placement/study abroad information on page 91. This course content is correct at the time of going to print. We regularly review our course content to make it relevant and current for the benefit of our students. For these reasons, course modules and entry requirements may be updated. 2024 course web pages will go live in summer 2023. Please check individual course pages for further details of facilities. Not all facilities are available for all courses.

Geography and Environment

Courses	A level	BTEC	GCSE
Disaster and Emergency Management BSc (Hons) ¹ UCAS: N252 / Int: EECU130 www.coventry.ac.uk/ug/N252	BCC	DMM	Minimum five graded 9-4 including English and Maths
Geography BA (Hons) ¹ UCAS: L700 / Int: EECU127 www.coventry.ac.uk/ug/L700	BBC	DMM	Minimum five graded 9-4 including English and Maths
Geography BSc (Hons) ¹ UCAS: F800 / Int: EECU126 www.coventry.ac.uk/ug/F800	BBC	DMM	Minimum five graded 9-4 including English and Maths
Geography and Environmental Hazards BSc (Hons) ¹ UCAS: FH82 / Int: EECU128 www.coventry.ac.uk/ug/FH82	BBC	DMM	Minimum five graded 9-4 including English and Maths
Renewable Energy BSc (Hons) ¹ UCAS: HN86 / Int: EECU129 www.coventry.ac.uk/ug/HN86	BBC	DMM	Minimum five graded 9-4 including English and Maths

Duration: 3 years full-time or 4 years sandwich. Int: denotes International code.

How can we predict potential hazards in the future by studying the patterns of the planet?

How do historical and modern activities affect our cultural and built environment? If you are interested in how our rapidly changing world affects lives around the globe, then we could have the right course for you.

Our geography courses provide you with opportunities to take part in challenging residential field trips each year*. Employability is a key focus and graduates have gone on to successful careers in utility companies, research institutes, government agencies, charitable organisations, field test centres, local authorities and consultancies.

KEY FEATURES

- Our Geography courses share a common first year, meaning you could switch degree after your first year (to see which courses, see pages 88-89)
- Soils, geotechnics and high-spec computer labs, CAD studios, map room and the interactive Simulation Centre
- Study abroad or placement year opportunities*
- Activity-led learning through UK and international field trips* – recent trips include Abu Dhabi, Barcelona and South America.



* Please see full placement/study abroad information on page 91. This course content is correct at the time of going to print. We regularly review our course content to make it relevant and current for the benefit of our students. For these reasons, course modules and entry requirements may be updated. 2024 course web pages will go live in summer 2023. Please check individual course pages for further details of facilities. Not all facilities are available for all courses.

1



Accreditations and memberships that may apply – see page 12 for details on accreditations. Please check the relevant course web page for up-to-date information on the current accreditation status.

LEARN

MORE

History, Philosophy, Politics and International Relations

Courses	A level	BTEC	GCSE
History BA (Hons) UCAS: V140 / Int: AHU110 www.coventry.ac.uk/ug/V140	BBC	DMM	Minimum five graded 9-4 including English
History and Politics BA (Hons) UCAS: LVF1 / Int: AHU111 www.coventry.ac.uk/ug/LVF1	BBC	DMM	Minimum five graded 9-4 including English
International Relations BA (Hons) UCAS: L250 / Int: AHU112 www.coventry.ac.uk/ug/L250	BBC	DMM	Minimum five graded 9-4 including English
Philosophy BA (Hons) UCAS: V500 / Int: AHU115 www.coventry.ac.uk/ug/V500	BBC	DMM	Minimum five graded 9-4 including English
Politics BA (Hons) UCAS: L200 / Int: AHU113 www.coventry.ac.uk/ug/L200	BBC	DMM	Minimum five graded 9-4 including English
Politics and International Relations BA (Hons) UCAS: L210 / Int: AHU114 www.coventry.ac.uk/ug/L210	BBC	DMM	Minimum five graded 9-4 including English

Related courses: **Sociology** – see page 74, **Sociology and Criminology** – see page 74

Duration: 3 years full-time or 4 years sandwich. Int: denotes International code.

These subjects ask big questions about the nature of human society and culture. We take a non-traditional approach, with practical and employability-focused courses. By nurturing your intellectual curiosity, cultivating your passions and creating an inclusive environment, you have the space to grow personally and professionally.

We study contemporary issues using innovative methods which develop your critical imagination. History students have the opportunity to learn documentary filmmaking and digital content creation. Philosophy modules include “Life, the Universe and Everything” and “The Existentialist Café”. International Relations students recently had the opportunity to attend a Model NATO event in London where they dealt with a simulated international crisis.

KEY FEATURES

- Some courses have a shared common first year, meaning you could switch degree after your first year (to see which courses, see pages 88-89)
- No exams – innovative assessments
- Showcase your work at the Annual Degree Show
- Guest lectures*
- Study abroad or placement year opportunities*
- UK and international field trips* – recent trips include Sicily and Valencia.



* Please see full placement/study abroad information on page 91.
This course content is correct at the time of going to print. We regularly review our course content to make it relevant and current for the benefit of our students. For these reasons, course modules and entry requirements may be updated.
2024 course web pages will go live in summer 2023.
Please check individual course pages for further details of facilities. Not all facilities are available for all courses.



Placements

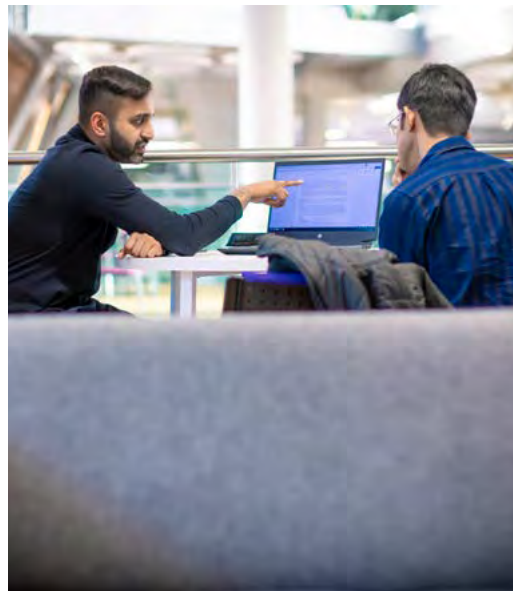
ACCELERATE YOUR CAREER WITH A PLACEMENT

What makes a graduate stand out?

Placement experience is a great way of giving you a competitive edge. You can:

- apply your knowledge
- develop your skills
- build your professional network
- widen your horizons.

That's why many of our undergraduate degrees offer you the opportunity to do a **work placement year** in the UK or abroad.* Check the individual course information on our website to find out more details. And remember, our Talent Team is there to support you every step of the way.



GEORGE FLYNN

Business Management BA (Hons)
Junior Project Manager at IBM

"My main position was in-house analysis and I was able to work with the client on different roles that interested me and my future career.

"My placement adviser helped me right from the start of year two, from sorting out my CV to cover letter writing. And then as I went through the placement process, I did numerous mock interviews and preparation for assessment centres as well."

AMAL ADAM

Biomedical Science BSc (Hons)
Trainee biomedical scientist at Oxford University Hospital NHS Foundation Trust

"Completing my placement has given me an opportunity to know what to specialise in during my final year. It has allowed me to adapt everything I've learned in my course into real-life work.

"I had weekly sessions with the Talent Team, and we would go through all of the positions applied for, and what I potentially could apply for. And we looked at my CV and how to improve it as well, depending on what job I was looking for."

EVAHNA BAINS

International Fashion Business BA (Hons)
Creative intern at Disney

"I worked on commercial collaboration projects and my most memorable moments were attending premieres and meeting characters around the office.

"Completing my placement has given me a lot of connections and an idea of what I would like to do in the future. My advice would be to take the leap because you've got nothing to lose and a lot to gain."

SEE

MORE

BERNARD WAIHENYA

Computer Science BSc (Hons)
Placement at Manage IT Limited in Nairobi, Kenya

"There was a lot of hands-on, technical experience, as well as learning how to understand the different needs of clients and what works best for them.

"My placement adviser helped with the pre-application process of just finding out what I wanted to get into. As well as this he reached out over the course of my placement, just finding out how I was getting on and if I needed any help or guidance.

"Completing my placement has given me insight into the industry that I'd like to go in, as well as building up connections in the industry."

DEVIN ANDREW

Financial Economics BSc (Hons)
Sales and Deal Management Intern at The Walt Disney Company

"I learned the ins and outs of the operations of one of the world's largest media distribution businesses. I got an insight into several different areas of the business such as legal, finance, acquisitions and sales.

"The Talent Team helped me in the application process for my internship and they offer a lot of support in applying for graduate roles.

"I would recommend that every student does a placement because it gives you a better insight of what you like and what you don't like. It also gives you a really good advantage applying for roles after uni, when it's already very competitive."

CHRYSANNA AIREY

Business and Marketing BA (Hons)
Marketing executive placement at Baxter Healthcare

"My placement has been the best thing that I've done. The most surprising thing was the amount of responsibility they gave me on projects. And completing my placement year has given me a graduate role as I've been offered a place on their graduate scheme.

"The Talent Team to me are the CV and cover letter superheroes!"

Law and Criminology

Courses	A level	BTEC	GCSE
Law			
Commercial Law LLB (Hons) ^{1,2,3} UCAS: M221 / Int: FBLU094 www.coventry.ac.uk/ug/M221	BBC	DMM	Minimum five graded 9-4 including English and Maths
Criminal Law and Justice LLB (Hons) ^{1,2,3} UCAS: M223 / Int: FBLU095 www.coventry.ac.uk/M223	BBC	DMM	Minimum five graded 9-4 including English and Maths
International Law LLB (Hons) ^{1,2,3} UCAS: M224 / Int: FBLU093 www.coventry.ac.uk/ug/M224	BBC	DMM	Minimum five graded 9-4 including English and Maths
Law LLB (Hons) ^{1,2,3} UCAS: M100 / Int: FBLU092 www.coventry.ac.uk/ug/M100	BBC	DMM	Minimum five graded 9-4 including English and Maths
Criminology			
Criminology BA (Hons) UCAS: L370 / Int: HLSU257 www.coventry.ac.uk/ug/L370	BBC†	DMM	Minimum five graded 9-4 including English and Maths
Criminology and Law BA (Hons) UCAS: M930 / Int: HLSU258 www.coventry.ac.uk/ug/M930	BBC†	DMM	Minimum five graded 9-4 including English and Maths
Criminology and Psychology BA (Hons) UCAS: CM89 / Int: HLSU259 www.coventry.ac.uk/ug/CM89	BBC†	DMM	Minimum five graded 9-4 including English and Maths
Forensic Investigations BSc (Hons) ⁴ UCAS: F410 / Int: HLSU261 www.coventry.ac.uk/ug/F410	BBC†	DMM	Minimum five graded 9-4 including English and Maths
Sociology and Criminology BA (Hons) UCAS: LM39 / Int: AHU117 www.coventry.ac.uk/ug/LM39	BBC	DMM	Minimum five graded 9-4 including English

Related courses: **Forensic Psychology** – see page 74

Duration: 3 years full-time or 4 years sandwich. † Subject-specific requirements at A level/BTEC. Int: denotes International code.

Do you have a passion for justice, the causes of criminality or how crimes are solved?

Our practically focused courses can set you up for a career in your chosen field.

Our law degrees blend theory, practical legal skills and employability throughout. We know that it's not just your degree that sets you apart. That's why we offer networking and placement opportunities, competitions and conferences to build your confidence and skills*.

Our criminology courses aim to provide you with a critical perspective to be able to answer important questions such as 'what causes crime?' and 'do prisons work?'. Forensic investigations students follow a 'crime scene to court' approach, developing skills using mock crime scenes and virtual reality scenarios.

KEY FEATURES

- Some courses have a shared common first year, meaning you could switch degree after your first year (to see which courses, see pages 88-89)
- Current industry links with organisations including the police, Crown Prosecution Service, HM Prison Service and Positive Youth Foundation
- Hone your practical legal skills in our dedicated Moot Room – a modern courtroom environment
- Coventry Law Centre Legal Clinic offers the chance to work with real clients*
- Study abroad or placement year opportunities*
- UK and international field trips* – recent trips include New York and Krakow.

* Please see full placement/study abroad information on page 91. This course content is correct at the time of going to print. We regularly review our course content to make it relevant and current for the benefit of our students. For these reasons, course modules and entry requirements may be updated. 2024 course web pages will go live in summer 2023. Please check individual course pages for further details of facilities. Not all facilities are available for all courses.



LEARN
MORE

Accreditations and memberships that may apply – see page 12 for details on accreditations. Please check the relevant course web page for up-to-date information on the current accreditation status.

Mathematics, Physics and Data Science

Courses	A level	BTEC	GCSE
Data Science BSc (Hons)¹ UCAS: 256A / Int: EECU148 www.coventry.ac.uk/ug/256A	BBB [†]	‡	Minimum five graded 9-4 including English and Maths
Data Science MSci¹ UCAS: 257A / Int: EECU149 www.coventry.ac.uk/ug/257A	ABB [†]	‡	Minimum five graded 9-4 including English and Maths
Mathematics BSc (Hons)¹ UCAS: G100 / Int: EECU145 www.coventry.ac.uk/ug/G100	BBB [†]	‡	Minimum five graded 9-4 including English and Maths
Mathematics and Statistics BSc (Hons)¹ UCAS: GG13 / Int: EECU146 www.coventry.ac.uk/ug/GG13	BBC [†]	‡	Minimum five graded 9-4 including English and Maths
Physics and Mathematics BSc (Hons)¹ UCAS: F302 / Int: EECU147 www.coventry.ac.uk/ug/F302	BBB [†]	‡	Minimum five graded 9-4 including English and Maths

Duration: 3 years full-time or 4 years sandwich. MSci 4 years full-time or 5 years sandwich.† Subject-specific requirements at A level/BTEC. ‡ Considered on an individual basis. Int: denotes International code.

By focusing on using real-world problems, we aim to equip you to succeed in the workplace and help drive technological change in an ethical and professional manner.

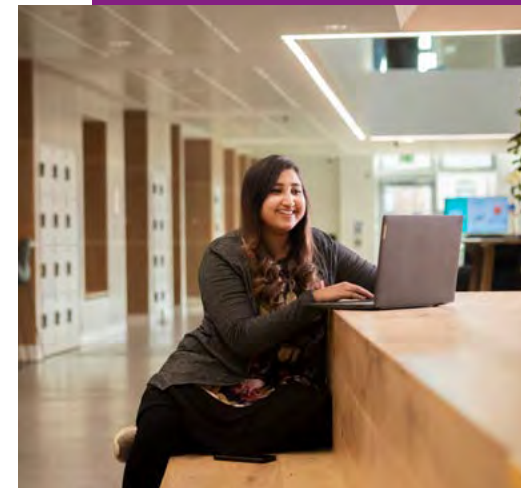
Data science has revolutionised the way we live. Everything from tracking weather patterns to how companies market to potential clients leverages the data footprint we make every day. Our courses are designed to equip you with the tools necessary to explore this dynamic and exciting domain, often using real-world data sets in the process.

A sound theoretical foundation in core areas of mathematics is key for our courses in this field. You will also have opportunities for practice-based applications, often to real problems using real data sets and industry-standard software.

Physics aims to explore phenomena at all length scales, from the sub-atomic level (quantum mechanics) to the macroscopic scale (cosmology), and everything in between. Through designing and conducting experiments, you will have the opportunity to develop skills applicable to many areas of employment and research.

KEY FEATURES

- Some courses have a shared common first year, meaning you could switch degree after your first year (to see which courses, see pages 88-89)
- Specialist PC labs, a mathematics and physics lab
- sigma offers free, expert, one-to-one help with mathematics and statistics for all students on a drop-in or appointment basis (subject to availability)
- Annual talent showcase brings together students and top employers to celebrate the most innovative and interesting projects (subject to availability)
- Study abroad or placement year opportunities.*



1



* Please see full placement/study abroad information on page 91. This course content is correct at the time of going to print. We regularly review our course content to make it relevant and current for the benefit of our students. For these reasons, course modules and entry requirements may be updated. 2024 course web pages will go live in summer 2023. Please check individual course pages for further details of facilities. Not all facilities are available for all courses.

Accreditations and memberships that may apply – see page 12 for details on accreditations. Please check the relevant course web page for up-to-date information on the current accreditation status.

LEARN
MORE

Media and Journalism

Courses	A level	BTEC	GCSE
Foundation Diploma in Art, Design and Media[‡] Direct entry: AHF001 www.coventry.ac.uk/ug/AHF001	C	M	Minimum five graded 9-4 including Art and Design, English and Maths
Film and Photography			
Film Production BA (Hons) UCAS: P320 / Int: AHU083 www.coventry.ac.uk/ug/P320	BBC	DMM	Minimum five graded 9-4 including English
Photography BA (Hons) UCAS: W640 / Int: AHU095 www.coventry.ac.uk/ug/W640	BBB	DDM	Minimum five graded 9-4 including English
Visual Effects (VFX) BA (Hons) UCAS: W614 / Int: AHU097 www.coventry.ac.uk/ug/W614	BBC	DMM	Minimum five graded 9-4 including English and Maths
Media and Journalism			
Digital Media BA (Hons) UCAS: P479 / Int: AHU096 www.coventry.ac.uk/ug/P479	BBC	DMM	Minimum five graded 9-4 including English
Journalism BA (Hons)[‡] UCAS: PP53 / Int: AHU086 www.coventry.ac.uk/ug/PP53	BBC	DMM	Minimum five graded 9-4 including English
Media and Communications BA (Hons) UCAS: P910 / Int: AHU085 www.coventry.ac.uk/ug/P910	BBC	DMM	Minimum five graded 9-4 including English
Media Production BA (Hons) UCAS: P310 / Int: AHU084 www.coventry.ac.uk/ug/P310	BBC	DMM	Minimum five graded 9-4 including English

Related courses: **Animation** – see page 34, **Interactive Media and Web Technologies** – see page 44

Duration: 3 years full-time or 4 years sandwich where available. ‡ 1 year full-time. Int: denotes International code.

We learn collaboratively and our courses are hands-on. We show and share our work in a supportive environment with global ambitions. We are informed by industry, offer truly outstanding facilities and our expert staff and technicians are committed to your success.

This is a place where you will learn new skills, where you get to explore that idea that you've always wanted to make happen. Collaborating on projects with other students and industry contacts, you'll get a clear sense of how your own creative passion can become your engine to a successful career.

KEY FEATURES

- New multi-million-pound Delia Derbyshire building – see page 36
- Music and radio studios, video recording and music editing suites
- Media courses have access to The Tank Studio – a live HD audio and video production studio that houses high-end broadcasting technology
- Media Loan Shop where you can access high-standard professional media equipment
- Annual Degree Show
- Some courses have a shared common first year, meaning you could switch degree after your first year (to see which courses, see pages 88-89)
- Study abroad or placement year opportunities.*



* Please see full placement/study abroad information on page 91. This course content is correct at the time of going to print. We regularly review our course content to make it relevant and current for the benefit of our students. For these reasons, course modules and entry requirements may be updated. 2024 course web pages will go live in summer 2023. Please check individual course pages for further details of facilities. Not all facilities are available for all courses.

1



Accreditations and memberships that may apply – see page 12 for details on accreditations. Please check the relevant course web page for up-to-date information on the current accreditation status.

LEARN

MORE

Music and Performance

Courses	A level	BTEC	GCSE
Acting for Stage and Screen BA (Hons) UCAS: W411 / Int: AHU082 www.coventry.ac.uk/ug/W411	BCC	DMM	Minimum five graded 9-4 including English
Music and Audio Production BSc (Hons)^{1,2} UCAS: W374 / Int: AHU123 www.coventry.ac.uk/ug/W374	BBB	DDM	Minimum five graded 9-4 including English and Maths
Popular Music Performance and Songwriting BA (Hons)¹ UCAS: W315 / Int: AHU081 www.coventry.ac.uk/ug/W315	BBC	DMM	Minimum five graded 9-4 including English

Related courses: **Event Management** – see page 41

Duration: 3 years full-time or 4 years sandwich. Int: denotes International code.

Stimulating, challenging and trailblazing, our teaching approach aims to engage your passions and push you to perform at your best.

Our ethos is to provide an environment to develop creative, dynamic and able actors, musicians and practitioners. Graduates are versatile, resourceful and ready for a career in the creative industries.

You'll be taught by our experienced staff, many of whom are practitioners, as well as invited professional guests (subject to availability).

Our global outlook and innovative thinking resulted in the award-winning Immersive Telepresence in Theatre project, developed in conjunction with Tampere University in Finland. This space, created in both cities, uses cutting-edge technology, life-sized projection, high-speed internet connections and directional sound, giving the participants the illusion of occupying the same rehearsal room.

KEY FEATURES

- New multi-million-pound Delia Derbyshire building – see page 36
- Five recording studios, two flexible performance spaces with lighting and sound control rooms, rehearsal rooms, two theatre workshop/set construction spaces and wardrobe facilities
- Music courses have a shared common first year, meaning you could switch degree after your first year (to see which courses, see pages 88-89)
- Showcase your work at the Annual Degree Show
- Study abroad or placement year opportunities.*



1



2



* Please see full placement/study abroad information on page 91. This course content is correct at the time of going to print. We regularly review our course content to make it relevant and current for the benefit of our students. For these reasons, course modules and entry requirements may be updated. 2024 course web pages will go live in summer 2023. Please check individual course pages for further details of facilities. Not all facilities are available for all courses.

Accreditations and memberships that may apply – see page 12 for details on accreditations. Please check the relevant course web page for up-to-date information on the current accreditation status.

Simulated learning



Simulated learning is at the heart of our teaching approach. As a future healthcare professional, you can practise and **develop your skills** in a safe but authentic environment.

We've invested in facilities, technologies and **innovations that will prepare you** for the daily challenges ahead. At the same time, we aim to equip you with the skills to thrive under pressure and critically evaluate a range of situations.

A REALISTIC ENVIRONMENT

The Alison Gingell Building features a mock ambulance, operating theatre, hospital wards, midwifery suite, radiography suite, critical care settings, therapy suites, community housing and other healthcare environments relevant to practice.

Using these facilities and specialist equipment to **simulate scenarios**, you can apply theory to real-world situations with your fellow students.

- Paramedics treat patients in the confines of the ambulance
- Occupational therapists use the community houses to test adaptations to help people live independently
- Mental health nurses use specialist audio equipment that replicates the experience of patients who hear voices
- Nurses practise clinical skills on our hospital wards.



READY FOR THE REAL WORLD

The majority of our healthcare courses include placements in a healthcare setting as part of the professional body requirements. Using people and technology to simulate real-life situations, we'll ensure you're thoroughly prepared for this experience.

- **High-fidelity manikins** can be programmed to replicate many scenarios
- **Mask-Ed** – our specially trained staff wear high fidelity props to 'become' patients and teach their expertise through their adopted personas, such as Bernard who has dementia
- **Virtual simulated placements** – gain access to virtual patients, situations and environments, such as hospital wards and patients' homes
- **Actors role-play** scenarios to test your learning.



We had a virtual case study on wound care where we had to follow the guidance as to how to repair it. That scenario was helpful because when I was in A&E, we had two different wounds needing two different approaches. It definitely made me feel like I knew what to do.

Amy Poole MacDonald

Children and Young People's Nursing BSc (Hons)



REAL WORLD

SIMULATION

Nursing, Midwifery and Healthcare

Courses	A level	BTEC	GCSE
Nursing and Midwifery			
Adult Nursing BSc (Hons)¹ UCAS: B740 / Int: HLSU195 www.coventry.ac.uk/ug/B740	BBC [†]	DMM [†]	Minimum five graded 9-4 including English, Maths and Science
Adult Nursing BSc (Hons) Blended Learning¹ UCAS: B749 www.coventry.ac.uk/ug/B749	BBC [†]	DMM [†]	Minimum five graded 9-4 including English, Maths and Science
Children and Young People's Nursing BSc (Hons)¹ UCAS: B730 / Int: HLSU196 www.coventry.ac.uk/ug/B730	BBB [†]	DDM [†]	Minimum five graded 9-4 including English, Maths and Science
Learning Disabilities Nursing BSc (Hons)¹ UCAS: B761 / Int: HLSU197 www.coventry.ac.uk/ug/B761	BCC [†]	DMM [†]	Minimum five graded 9-4 including English, Maths and Science
Mental Health Nursing BSc (Hons)¹ UCAS: B760 / Int: HLSU198 www.coventry.ac.uk/ug/B760	BCC [†]	DMM [†]	Minimum five graded 9-4 including English, Maths and Science
Midwifery BSc (Hons)¹ UCAS: B720 / Int: HLSU235 www.coventry.ac.uk/ug/B720	ABB [†]	DDM [†]	Minimum five graded 9-4 including English, Maths and Science, with Maths at a minimum grade 5
Nursing Associate Foundation Degree FdSc^{†1} UCAS: B700 / Int: HLSFD053 www.coventry.ac.uk/ug/B700	32 tariff points	32 tariff points	English and Maths graded 9-4
Healthcare Professions			
Diagnostic Radiotherapy BSc (Hons)/MSci² UCAS: B821 / Int: HLSU241 www.coventry.ac.uk/ug/B821	BBB [†]	DDM [†]	Minimum five graded 9-4 including English and Maths
Dietetics BSc (Hons)^{2,3} UCAS: B410 / Int: HLSU221 www.coventry.ac.uk/ug/B410	ABB [†]	DDM [†]	Minimum five graded 9-4 including English and Maths
Occupational Therapy BSc (Hons)^{2,4} UCAS: B920 / Int: HLSU199 www.coventry.ac.uk/ug/B920	BBC [†]	DDM [†]	Minimum five graded 9-4 including English and Maths
Operating Department Practice BSc (Hons)² UCAS: B991 / Int: HLSU201 www.coventry.ac.uk/ug/B991	BBC [†]	DMM [†]	Minimum five graded 9-4 including English, Maths and Science
Paramedic Science BSc (Hons)² UCAS: B950 / Int: HLSU222 www.coventry.ac.uk/ug/B950	BBC [†]	DMM [†]	Minimum five graded 9-4 including English, Maths and two Sciences
Physiotherapy BSc (Hons)^{2,5} UCAS: B160 / Int: HLSU203 www.coventry.ac.uk/ug/B160	ABB [†]	DDM [†]	Minimum seven graded 9-4 including English, Maths and Science, with Science at a minimum grade 6
Public Health BSc (Hons) UCAS: L431 / Int: HLSU267 www.coventry.ac.uk/ug/L431	BBC [†]	DMM	Minimum five graded 9-4 including English, Maths and Science

Related courses: **Nutrition and Health** – see page 38

Duration: 3 years full-time. † 2 years full-time. † Subject-specific requirements at A level/BTEC. Int: denotes International code.

* Please see full placement/study abroad information on page 91. Please visit our website for detailed course information including subject-specific entry requirements (including academic, convictions disclosure and health requirements) and current course fees. This course content is correct at the time of going to print. We regularly review our course content to make it relevant and current for the benefit of our students. For these reasons, course modules and entry requirements may be updated. 2024 course web pages will go live in summer 2023. Please check individual course pages for further details of facilities. Not all facilities are available for all courses.

A career in healthcare can be one of the most rewarding, challenging and varied professions.

Whether at the frontline of emergency care or in rehabilitation or prevention, you'll work in dynamic environments and make a significant contribution to patients' lives.

Our 'learning through exploration' approach to teaching means you can practise and develop your clinical and communication skills in a safe but realistic environment. Course placements give you an opportunity to put learning into practice in a real healthcare workplace.

KEY FEATURES

- Accreditations that give you eligibility to register with the relevant professional body on successful completion of the course (additional costs may apply)
- The multi-million-pound Alison Gingell Building features a mock ambulance, operating theatre, hospital wards, midwifery suite, critical care settings, radiography suite, community housing and other healthcare environments relevant to practice
- Dedicated laboratories for anatomy, electrotherapy and manual skills
- Excellent relationships with local NHS trusts and other healthcare providers
- Placements are a key feature of these courses (except Public Health) and are sourced by the university*
- For some courses, UK students may be eligible for the NHS Learning Support Fund grant of £5,000 a year.



Accreditations and memberships that may apply – see page 12 for details on accreditations. Please check the relevant course web page for up-to-date information on the current accreditation status.

Psychology and Social Studies

Courses	A level	BTEC	GCSE
Childhood, Youth and Education			
Childhood, Youth and Education Studies BA (Hons) UCAS: L591 / Int: HLSU260 www.coventry.ac.uk/ug/L591	BCC [†]	DMM	Minimum five graded 9-4 including English and Maths
Psychology			
Criminology and Psychology BA (Hons) UCAS: CM89 / Int: HLSU259 www.coventry.ac.uk/ug/CM89	BBC [†]	DMM	Minimum five graded 9-4 including English and Maths
Forensic Psychology BSc (Hons)¹ UCAS: CM82 / Int: HLSU263 www.coventry.ac.uk/ug/CM82	BBB [†]	DDM	Minimum five graded 9-4 including English and Maths
Psychology BSc (Hons)¹ UCAS: C800 / Int: HLSU264 www.coventry.ac.uk/ug/C800	BBB [†]	DDM	Minimum five graded 9-4 including English and Maths
Sport and Exercise Psychology BSc (Hons)¹ UCAS: C841 / Int: HLSU265 www.coventry.ac.uk/ug/C841	BBB [†]	DDM	Minimum five graded 9-4 including English and Maths
Social Work			
Social Work BA (Hons)^{‡ 2} UCAS: L500 / Int: HLSU262 www.coventry.ac.uk/ug/L500	BBB	DDM [†]	Minimum five graded 9-4 including English and Maths
Sociology			
Sociology BA (Hons) UCAS: L300 / Int: AHU116 www.coventry.ac.uk/ug/L300	BBC	DMM	Minimum five graded 9-4 including English
Sociology and Criminology BA (Hons) UCAS: LM39 / Int: AHU117 www.coventry.ac.uk/ug/LM39	BBC	DMM	Minimum five graded 9-4 including English

Related courses: **Criminology** – see page 62, **History, Philosophy, Politics and International Relations** – see page 58

Duration: 3 years full-time or 4 years sandwich. ‡ 3 years full-time. † Subject-specific requirements at A level/BTEC. Int: denotes International code.

These courses focus on understanding people, the way they think and behave as well as how to make a positive difference to their lives.

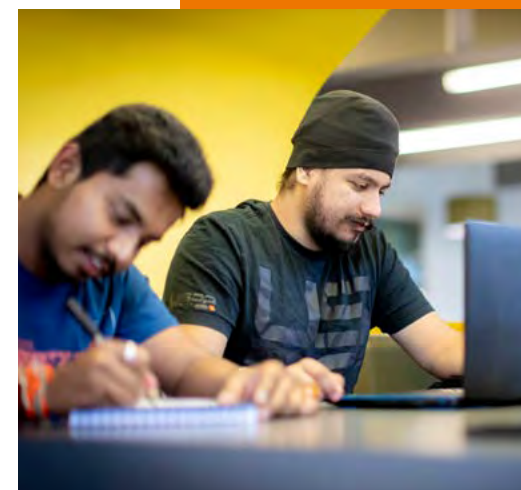
Our psychology courses explore the behaviours, thoughts and actions of people, and apply these to the understanding of real-world problems. Sociology gives you the opportunity to investigate and document a situation, create and analyse your own data, and draw your own conclusions about the nature of society.

Childhood, Youth and Education Studies and Social Work students explore how they can contribute to enhancing the life chances of people in social need.

KEY FEATURES

- Some courses have a shared common first year, meaning you could switch degree after your first year (to see which courses, see pages 88-89)
- Accreditations that could give you a head start in your career
- Psychopharmacology facilities, EEG and eye-tracking technology
- Specialist software for building online experiments and surveys, data management and analysis
- Study abroad or placement year opportunities*
- UK and international field trips.*

* Please see full placement/study abroad information on page 91. This course content is correct at the time of going to print. We regularly review our course content to make it relevant and current for the benefit of our students. For these reasons, course modules and entry requirements may be updated. 2024 course web pages will go live in summer 2023. Please check individual course pages for further details of facilities. Not all facilities are available for all courses.



LEARN

MORE

Accreditations and memberships that may apply – see page 12 for details on accreditations. Please check the relevant course web page for up-to-date information on the current accreditation status.

Sport

Courses	A level	BTEC	GCSE
Sports, Exercise and Therapy Sciences			
Sport and Exercise Psychology BSc (Hons)¹ UCAS: C841 / Int: HLSU265 www.coventry.ac.uk/ug/C841	BBB [†]	DDM	Minimum five graded 9-4 including English and Maths
Sport and Exercise Science BSc (Hons)^{2,3} UCAS: C600 / Int: HLSU245 www.coventry.ac.uk/ug/C600	BBB [†]	DDM [†]	Minimum five graded 9-4 including English, Maths and two Sciences
Sports and Exercise Therapy BSc (Hons)⁴ UCAS: BC96 / Int: HLSU256 www.coventry.ac.uk/ug/BC96	BBC [†]	DMM [†]	Minimum five graded 9-4 including English, Maths and two Sciences
Sports Coaching BSc (Hons)³ UCAS: C610 / Int: HLSU268 www.coventry.ac.uk/ug/C610	BBC [†]	DMM [†]	Minimum five graded 9-4 including English, Maths and two Sciences
Management			
Sport Management BA (Hons)^{5,6} UCAS: N285 / Int: FBLU101 www.coventry.ac.uk/ug/N285	BBC	DMM	Minimum five graded 9-4 including English and Maths

Related courses: **Event Management** – see page 41

Duration: 3 years full-time or 4 years sandwich. † Subject-specific requirements at A level/BTEC. Int: denotes International code.

If you want to turn your passion for sport into a career, then our specialist courses aim to help you achieve your goals.

Preparing you for a variety of graduate-level career options, sport and exercise science covers human physiology, psychology, anatomy, biomechanics and biochemistry. Coaching and psychology focus on the practical application of theory to real-life situations.

Sports and exercise therapy students can engage with clients in our on-site sports therapy clinic. They also have the opportunity to support events which have previously included the World Transplant Games*. If management is your passion, then we have excellent industry links.

KEY FEATURES

- Alison Gingell Building features specialist laboratories for sport science, biomechanics and strength and conditioning
- Running track with force plates, 3D motion capture system for biomechanical analysis and sports therapy clinic
- Alter G treadmill, Isokinetic Dynamometry, bod-pod and Vicon 3D motion analysis
- Westwood Heath sports facilities include seven grass sports pitches, an AstroTurf pitch and an analysis suite
- Accreditations that could give you a head start in your career
- Some courses have a shared common first year, meaning you could switch degree after your first year (to see which courses, see pages 88-89)
- Study abroad or placement year opportunities*
- UK and international field trips*.



* Please see full placement/study abroad information on page 91. This course content is correct at the time of going to print. We regularly review our course content to make it relevant and current for the benefit of our students. For these reasons, course modules and entry requirements may be updated. 2024 course web pages will go live in summer 2023. Please check individual course pages for further details of facilities. Not all facilities are available for all courses.

Accreditations and memberships that may apply – see page 12 for details on accreditations. Please check the relevant course web page for up-to-date information on the current accreditation status.

LEARN

MORE

Top-up courses

These courses enable students to 'top up' their existing qualifications to gain a full undergraduate degree.

If you have successfully completed a Higher National Diploma (HND) or Foundation Degree and want to study further, a top-up degree could allow you to progress onto the final year of an honours degree course. Some courses accept direct entry into the second year if you have a Higher National Certificate (HNC).

Our integrated International Business MBus gives you the opportunity to complete your undergraduate studies and gain a postgraduate qualification. Entering in the third year of undergraduate study, this accelerated course could see you graduate with an MBus qualification in just four semesters.

The top-up courses offered by the Faculty of Health and Life Sciences are designed for qualified health professionals who want to achieve a degree-level award, or graduates who require accredited degree status for their chosen careers.

Faculty of Arts and Humanities

- English and Education Management BA (Hons)
- Media BA (Hons)

Faculty of Business and Law

- Accounting and Finance for International Business BSc (Hons) (direct entry to Year 2 or 3)
- Business Enterprise and Innovation Management BA (Hons)
- International Business BA (Hons) (direct entry to Year 2 or 3)
- International Business MBus
- International Digital Marketing BA (Hons)
- International Event and Hospitality Management BA (Hons)
- International Finance and Banking BSc (direct entry to Year 2 or 3)
- International Marketing BA (Hons)

Faculty of Engineering, Environment and Computing

- Applied Mechanical Engineering BSc (Hons)
- Artificial Intelligence BSc (Hons)
- Engineering Business Management BEng (Hons)
- Informatics BSc (Hons)

Faculty of Health and Life Sciences

- Biomedical Science BSc (individual modules)
- Nursing Studies BSc (Hons)
- Pre-Hospital Emergency Care BSc (Hons)

UK STUDENTS

For more information and to apply, please contact:

T: **024 7765 2222**

E: **ukadmissions@coventry.ac.uk**

INTERNATIONAL STUDENTS

For more information and to apply, please contact the International Office:

T: **+44 (0)24 7765 2152**

E: **generalenquiries.io@coventry.ac.uk**



WWW.COVENTRY.AC.UK/TOP-UP-COURSES

Entry and fees for UK students

If you are ready to apply, then this information explains how we assess course applications and the financial support that may be available to you. Remember, always refer to the specific course pages on our website for the latest and most accurate information about detailed entry requirements and tuition fees.

ENTRY REQUIREMENTS

You will need to meet the entry requirements for each of our undergraduate courses. Once we have received your application, we will assess your qualification results and your predicted grades, along with your personal statement and reference. If you are unsure about something before you submit your application, please contact us for advice.

In this prospectus, you will find typical A level and BTEC entry requirement grades for each course. We also accept a wide range of other qualifications, including the International Baccalaureate (IB) Diploma, Cambridge Technicals (CTEC), T Levels, Access qualifications and equivalent international qualifications. For some courses, you are also required to have studied certain subjects at GCSE or A level (or equivalent qualification).

Some of our courses (especially those that are creative or professional in nature) may also require you to attend an interview,

audition or portfolio showcase session. This allows us to assess your suitability as well as allow you to find out more about what your course involves and whether it's right for you. You can find out more about how this works for your course at www.coventry.ac.uk/course-interviews.

Did you know about our Fair Access Scheme, where we consider an applicant's personal circumstances and background? To find out more visit www.coventry.ac.uk/fairaccess.

FEES AND FINANCE

Tuition fees – Our tuition fees are published on our website. Fees for September 2024 are still to be confirmed, so please continue to check the course pages on the website for the latest information. Fees for students applying from outside the UK vary.

Cost of living – Apart from your course fees, you will need to consider the cost of living. While this will depend on your lifestyle and spending habits,

you could find your money goes further here in Coventry than in many other parts of the UK. For example, **Numbeo**, a worldwide database, listed the cost-of-living index in Coventry as 20% lower than in London, and rent on average 63% lower than in London in December 2022¹.

Financial support – As a UK undergraduate student, you may be entitled to two types of financial support – tuition fee loans and maintenance loans.

A tuition fee loan usually covers your course fees in full per year and is paid directly to the university. However, you may also be eligible to apply for a maintenance loan to help you with your living costs while at university. This is paid directly into your bank account, usually in three instalments throughout the year, at the start of each semester².

Student loans are not like standard loans that you would receive from a bank. You only start repaying them once you are employed and are earning over a certain amount of money per year. The earliest you will start repaying is the April after you leave your course.

FOR FURTHER INFORMATION
WWW.GOV.UK/STUDENT-FINANCE

Application guide

1. FIND

There are a few different ways you can get more information before applying. You can check out courses on our website or you can compare them on the UCAS and Discover Uni websites. Forums like The Student Room are also a good source of background information on student life.

2. VISIT

We provide opportunities for you to talk to our course tutors and current students in a range of ways, including open days, student-led tours of our campus and lots of interactive event activity on social media platforms.

4. PREPARE

If you are invited to an interview, audition or portfolio showcase, then you will be contacted with a booking link. Take a look at our online course pages for advice on what is required for the course you have applied for www.coventry.ac.uk/course-interviews.

3. APPLY

Once your heart is set on a course, you can apply through UCAS for full-time study. You can apply directly to us for part-time study or if you're applying from outside the UK, you can apply through our application portal www.coventry.ac.uk/apply. If you are applying through UCAS, be sure to submit your application before the January 2024 deadline (subject to change).

5. WAIT

Look out for any updates to your application on 'My Application' in your UCAS Hub. You can sign in at any point after you have applied and you will be able to check if any of your university choices have offered you a place, as well as reply to your offers. If you have applied via our application portal, keep checking your account as details about your application will be updated there and sent by email to you.

6. REPLY

Once you have received all your decisions from the universities you have applied to, the next step is to make your 'Firm' and 'Insurance' choices where applicable. To help you decide, we invite all our offer holders to on-campus or virtual events, held throughout the calendar year, as well as exclusive social groups to chat to academics and other offer holders.

8. WELCOME

We look forward to welcoming all new students to our student community. As well as enrolling and accessing your learning materials, during Welcome Week you'll have the opportunity to make new friends and find out more about the students' union societies.

7. RESULTS

If you are awaiting results, check 'My Application' in your UCAS Hub on results day to see whether you have been accepted onto the course. If you have not received the grades you were expecting, please get in touch with us – there may be other options available.

WWW.COVENTRY.AC.UK/APPLY

¹ www.numbeo.com/cost-of-living/in/Coventry.

² Proof of household income may be required to determine your eligibility.



International students

A truly global university, we currently have more than 13,000 international students of over 150 nationalities studying with us in the UK.

We offer a range of support and activities to help you to settle in quickly, including an airport transfer service and dedicated orientation events.

INTERNATIONAL STUDENT SUPPORT TEAM

Many members of our International Admissions Team have lived and studied overseas themselves. Their aim is to help you feel at home as they understand the impact of differences in language, culture and education systems.

Support starts from the moment you consider studying with us. Our team can answer questions on a range of subjects, including visas, immigration, finances, employment regulations and culture.


CONNECT WITH US

You can find us on social media including Facebook, Twitter, Instagram, WeChat and Weibo.

Alternatively, visit our events calendar at www.coventry.ac.uk/international/events to meet us at regional events or virtual open days and webinars. We run regular overseas offer events, admissions workshops, pre-departure meetings and recruitment fairs – these can be both in-person and virtual.

We're also available online via our Live Chat service at www.coventry.ac.uk/international-chat.

 [@coventryuni](https://www.youtube.com/coventryuni)
[@covcampus](https://twitter.com/covcampus)
[@covuni](https://www.instagram.com/covuni)
[/coventryuniversity](https://www.facebook.com/coventryuniversity)

 /考文垂大学
/英国考文垂大学
/考文垂大学
/英国考文垂大学

ENTRY REQUIREMENTS

Each of our undergraduate courses has a set of entry requirements that you will need to meet to gain access to the course. This prospectus shows typical A level and BTEC entry requirement grades for each course. We also accept a wide range of qualifications, including the IB Diploma, CTEC, Access qualifications and equivalent international qualifications. Some courses may also require you to have studied certain subjects at GCSE or A level (or equivalent qualification). You can view the entry criteria specific to your country at www.coventry.ac.uk/int-regional-entry-requirements or get in touch at generalenquiries.io@coventry.ac.uk.

Some of our courses (especially those that are creative or professional in nature) may also require you to attend an interview, audition or portfolio showcase session. This allows us to assess your suitability as well as giving you the opportunity to find out more about what your course involves and whether it's right for you. You can find out more about how this works for your course at www.coventry.ac.uk/course-interviews.

TUITION FEES¹

Fees for students applying from outside the UK vary. Prices may change due to inflation and governmental factors. At the time of printing this prospectus, tuition fees for courses starting in September 2024 were still to be confirmed, so please check our website for the latest information.

SCHOLARSHIPS

We offer a range of scholarships to help students with the financial costs of their education. You may be eligible for a scholarship based on your academic achievements, the course you want to study or the country you are from (subject to availability). Many scholarships should help you meet the financial costs of your tuition fees when you study with us. Check your eligibility for each scholarship at www.coventry.ac.uk/internationalscholarship.



HOW TO APPLY

Applying to Coventry University is quick and simple. You can apply:

- through our application portal
- through a local office or local representative in your country.

Find more information at www.coventry.ac.uk/apply.

NEXT STEPS

If your application is successful, we will send you an offer that clearly shows conditions that you will need to meet before you can enrol. If you meet the offer conditions you will need to pay a deposit before we can send you your Confirmation of Acceptance to Study (CAS) letter. This will enable you to apply for your student visa and accommodation. We will also ask you to make a second deposit payment before you enrol.

ACCOMMODATION

We recommend you submit your online application for accommodation as soon as possible. Once you receive your CAS letter and show evidence of this, we will send out an offer of accommodation (subject to availability). See page 30 for details and visit www.coventry.ac.uk/accommodation.

INTERNATIONAL STUDENT SUPPORT TEAM

T: **+44 (0)24 7765 2010**

E: studentsupport.io@coventry.ac.uk
www.coventry.ac.uk/international

¹ The tuition fee that is stated on the course web page and in the prospectus will apply for the first year of study. We will review our tuition fees each year. For international students, we may increase fees for each subsequent year of study but such increases will be no more than 5% above inflation.

Based on UKVI regulations at the time of print, students on degree level (and above) courses in the UK may be eligible for a visa under the UK Government's Graduate Immigration Route. This route enables students to stay and work, or look for work, in the UK at any skill level for up to two (2) years after successful completion of their course on a Student Visa. Check the most up-to-date guidance available to understand your eligibility and any updates from the UK Government before making an application or enrolment decision.

Other study choices

Although we are firmly rooted in Coventry, our ambition and innovation mean we have expanded our offering as part of the wider Coventry University Group¹.

Coventry University | London

Coventry University London is located in the heart of one of the biggest financial markets, in a city that is a global trading centre. It is the ideal place to learn about business. That's why all its degree level courses (excluding top-up courses) offer the opportunity for you to take a credit-bearing internship or placement, so you can put your skills into practice and make connections in the world of work².

www.coventry.ac.uk/london

CU | Coventry
London
Scarborough
Coventry University Group

Our CU options could provide you with the opportunity to study towards a Coventry University award with learning that fits around your life. CU locations include Coventry, Scarborough and London (Greenwich and Dagenham).
Coventry – www.coventry.ac.uk/cuc
Scarborough – www.coventry.ac.uk/cus
London – www.coventry.ac.uk/cul

Coventry University | Wrocław

Coventry University Wrocław offers the opportunity to study an English-taught degree in Poland.
www.coventry.ac.uk/wroclaw

DOWNLOAD A

PROSPECTUS

MORE

INFORMATION

MORE

INFORMATION



COLLABORATING INSTITUTIONS WORLDWIDE

You could also study at one of our many collaborating institutions across the world. Find out more at www.coventry.ac.uk/globalpartners.

¹ Please see information about Coventry University Group on page 91.
² Please see full placement/study abroad information on page 91.

Course index

Accountancy	46	Computer Systems Engineering	51
Accounting and Finance	46	Construction Project Management	52
Acting for Stage and Screen	68	Criminal Law and Justice	62
Adult Nursing	72	Criminology	62
Advertising and Digital Marketing	40	Criminology and Law	62
Aerospace Systems Engineering	50	Criminology and Psychology	62
Aerospace Technology	50	Data Science	64
Animation	34	Diagnostic Radiography	72
Architectural Design and Technology	52	Dietetics	72
Architectural Engineering	52	Digital Media	66
Architectural Technology	52	Disaster and Emergency Management	56
Architecture	34	Economics	46
Automotive and Transport Design	35	Electrical and Electronic Engineering	51
Automotive Engineering	50	Electronics and Communication Engineering	51
Aviation Management	50	English and Creative Writing	54
Banking and Finance	46	English Language and Literature	54
Biological and Forensic Sciences	38	English and Teaching English as a Foreign Language (TEFL)	54
Biomedical Science	38	English Literature	54
Building Surveying	52	Enterprise and Entrepreneurship	40
Business Administration	40	Ethical Hacking and Cyber Security	44
Business and Finance	46	Event Management	41
Business and Human Resource Management	40	Fashion	35
Business and Marketing	40	Fashion, Brand and Communication	35
Business Economics	46	Film Production	66
Business Management	40	Finance and Investment	46
Childhood, Youth and Education Studies	74	Financial Economics	46
Children and Young People's Nursing	72	Fine Art	34
Civil and Environmental Engineering	52	Food Safety, Inspection and Control	38
Civil Engineering	52	Food Science	38
Commercial Law	62	Forensic Investigations	62
Computer Science	44	Forensic Psychology	74
Computer Science with Artificial Intelligence	44		

Forensic Science	38	Motorsport Engineering	50
Foundation Art, Design and Media Practice	34	Music and Audio Production	68
Games Art	34	Nursing Associate	72
Games Design and Development	34	Nutrition and Health	38
Games Technology	45	Occupational Therapy	72
Geography	56	Operating Department Practice	72
Geography and Environmental Hazards	56	Paramedic Science	72
Global Financial Planning	46	Pharmacology	38
Graphic Design	34	Philosophy	58
History	58	Photography	66
History and Politics	58	Physics and Mathematics	64
Human Biosciences	38	Physiotherapy	72
Illustration	34	Politics	58
Information Technology Management	44	Politics and International Relations	58
Interactive Media and Web Technologies	44	Popular Music Performance and Songwriting	68
Interior Architecture and Design	34	Product Design	35
International Business Management	40	Psychology	74
International Fashion Business	35	Public Health	72
International Law	62	Quantity Surveying and Commercial Management	52
International Relations	58	Real Estate and Property Management	52
Journalism	66	Renewable Energy	52
Law	62	Social Work	74
Learning Disabilities Nursing	72	Sociology	74
Manufacturing Engineering	51	Sociology and Criminology	74
Marketing	40	Software Engineering	44
Mathematics	64	Sport and Exercise Psychology	74
Mathematics and Statistics	64	Sport and Exercise Science	76
Mechanical Engineering	51	Sport Management	41
Media and Communications	66	Sports and Exercise Therapy	76
Media Production	66	Sports Coaching	76
Mental Health Nursing	72	Visual Effects (VFX)	66
Midwifery	72		

Common first year

Some of our courses share a common first year – these groups are listed here.

The common first year gives you the chance to meet, mix and learn with students from other related courses. It could also give you the opportunity to gain shared skills and knowledge across disciplines – something that can be desirable for employers.

You may also be able to switch courses at the end of your first year (subject to degree sharing common first year and meeting academic and any visa requirements.)

- Accountancy
- Accounting and Finance

- Advertising and Digital Marketing
- Business Administration
- Business and Human Resource Management
- Business and Marketing
- Business Management
- Enterprise and Entrepreneurship
- Event Management
- International Business Management
- Marketing
- Sport Management

- Aerospace Systems Engineering
- Aerospace Technology

- Animation
- Digital Media
- Games Art
- Games Design and Development
- Visual Effects (VFX)

- Architectural Design and Technology
- Architectural Engineering*
- Architectural Technology
- Building Surveying
- Construction Project Management
- Quantity Surveying and Commercial Management
- Real Estate and Property Management

- Automotive and Transport Design
- Graphic Design
- Product Design

- Automotive Engineering
- Mechanical Engineering
- Motorsport Engineering

- Banking and Finance
- Business and Finance
- Business Economics
- Economics
- Finance and Investment
- Financial Economics
- Global Financial Planning

- Biological and Forensic Sciences
- Biomedical Science
- Human Biosciences
- Pharmacology

- Civil and Environmental Engineering
- Civil Engineering

- Commercial Law
- Criminal Law and Justice
- International Law
- Law

- Computer Science
- Computer Science with Artificial Intelligence
- Information Technology Management
- Interactive Media and Web Technologies
- Software Engineering

- Computer Systems Engineering
- Electrical and Electronic Engineering
- Electronics and Communication Engineering

- Criminology
- Criminology and Law
- Criminology and Psychology

- English and Creative Writing
- English Language and Literature
- English and TEFL
- English Literature

- Fashion
- Fashion, Brand and Communication
- International Fashion Business

- Film Production
- Media Production

- Fine Art
- Illustration
- Photography

- Food Safety, Inspection and Control
- Food Science
- Nutrition and Health

- Forensic Psychology
- Psychology
- Sport and Exercise Psychology

- Geography
- Geography and Environmental Hazards

- History
- History and Politics
- International Relations
- Politics
- Politics and International Relations

- Journalism
- Media and Communications

- Mathematics
- Mathematics and Statistics
- Physics and Mathematics

- Music and Audio Production
- Popular Music Performance and Songwriting

- Sociology
- Sociology and Criminology

Get exploring

Get to know us better with our face-to-face and online activities.

On-campus **Open Days** can give you a real sense of what it would be like to be a Coventry University student. They're a great way for you to meet our academic staff and current students, get a first-hand experience of the campus, our city-centre location, our accommodation and support services. They run throughout the year. For the latest dates and how to book, visit www.coventry.ac.uk/opendays.

We also offer smaller 'drop-in' style events for more course-focused information gathering, including **student-led tours**. You can join a small group, led by a current student, on an extended walking tour of the campus, accommodation and nearby city centre. And if you can't visit in person, there's our **virtual tour** at virtualtours.coventry.ac.uk.

Our **digital activity** includes:

- webinars and virtual events
- discussions on Zoom and Microsoft Teams
- chats and live events on Unibuddy
- chatting with current students on The Student Room website
- invitations to join closed social groups.

And don't forget to **keep in touch** with the latest on social:

- 🎵 @coventryuni
- 📷 @covuni
- 🐦 @covcampus
- 📘 /coventryuniversity
- 📺 /coventryuniversity

FIND OUR NEXT OPEN DAY
WWW.COVENTRY.AC.UK/OPENDAYS



VISIT AN OPEN DAY

BOOK NOW



Information is correct at the time of going to print, however, changes may occur. Check our website, www.coventry.ac.uk or contact us on +44 (0)24 7765 7688 before applying to study to check the most up-to-date position. Where there is a difference between the contents of this prospectus and the Coventry University website, the contents of the applicable website take precedence and represent the basis on which we intend to deliver our services to you.

For the purposes of this prospectus, the Coventry University Group means Coventry University, Coventry University London Campus Limited (trading as Coventry University London) and Coventry University College Limited, trading as CU London, CU Coventry and CU Scarborough, as well as Coventry University Online Limited.

By accepting your offer of a place with us, a Student Contract ("the Contract") will be formed between you and the university. The Contract will detail all of your rights and also the obligations you will be bound by during your time as a student and will also contain all of the obligations that the university owes to you. You should read the Contract before you accept an offer of a place and before you enrol at the university.

The Coventry University group assessment strategy ensures that our courses are fairly assessed and allows us to monitor student progression towards achieving the intended learning outcomes. Assessments may include exams, individual assignments or group work elements. Please check your course page for specific information.

Please note that we are unable to guarantee any UK or international opportunities (whether required or optional) such as internships, work experience, field trips, conferences, placements or study abroad opportunities and that all such opportunities may be subject to additional costs (which could include, but are not limited to, equipment, materials, bench fees, studio or facilities hire, travel, accommodation and visas), competitive application, availability and/or meeting any applicable visa requirements. To ensure that you fully understand the visa requirements, please contact our international office at www.coventry.ac.uk/international. All student quotes featured are from 2021-23.

The online learning platform provider may be subject to change. The university may deliver certain contact hours and assessments via emerging online technologies and methods across all courses. In response to the COVID-19 pandemic, we are prepared for courses due to start in or after the 2024/25 academic year to be delivered in a variety of forms. The form of delivery will be determined in accordance with Government and Public Health guidance. Whether on campus or online, our key priority is staff and student safety.

Due to COVID-19, some facilities (including some teaching and learning spaces) and some non-academic offerings (particularly in relation to international experiences), may vary from those advertised and may have reduced availability or restrictions on their use.

Get in touch



@coventryuni



@covuni



@covcampus



/coventryuniversity

Coventry University
Priory Street
Coventry
CV1 5FB
United Kingdom

www.coventry.ac.uk

This document is available in PDF format on request. Please contact Marketing and Communications on **+44 (0)24 7765 7688**

Cover students:

Florin Popa | Roxanne Farias | Saffron Davies | Thomas Winsome

Coventry
University 

J4726-22 Second Edition © Coventry University.